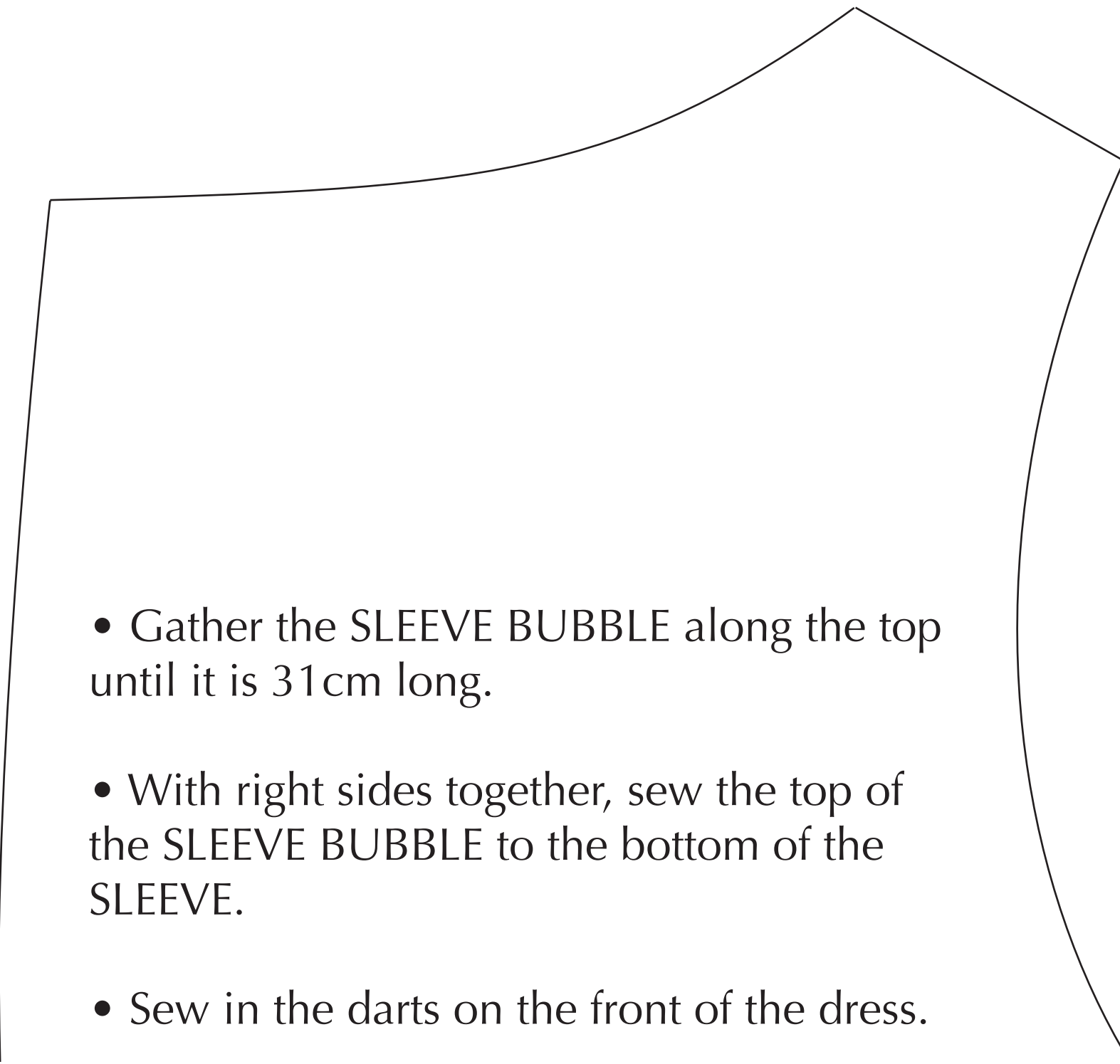
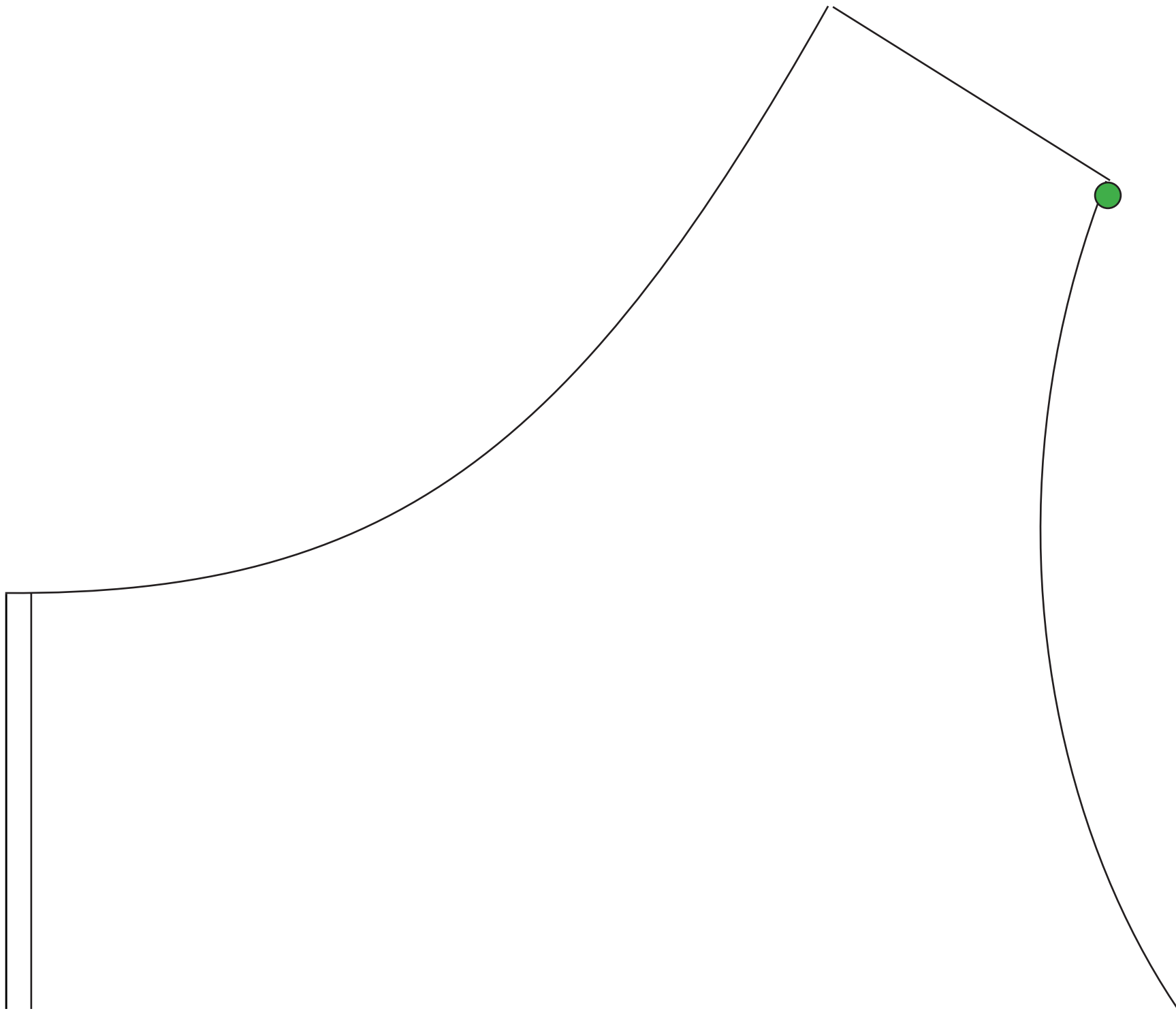


# overview

## party shift

[www.sewdifferent.co.uk](http://www.sewdifferent.co.uk)

- 
- Gather the SLEEVE BUBBLE along the top until it is 31cm long.
  - With right sides together, sew the top of the SLEEVE BUBBLE to the bottom of the SLEEVE.
  - Sew in the darts on the front of the dress.



GATHER TOP TO FIT 31CM

SLEEVE BUBBLE  
PARTY SHIFT  
Cut 2 on  
folded fabric

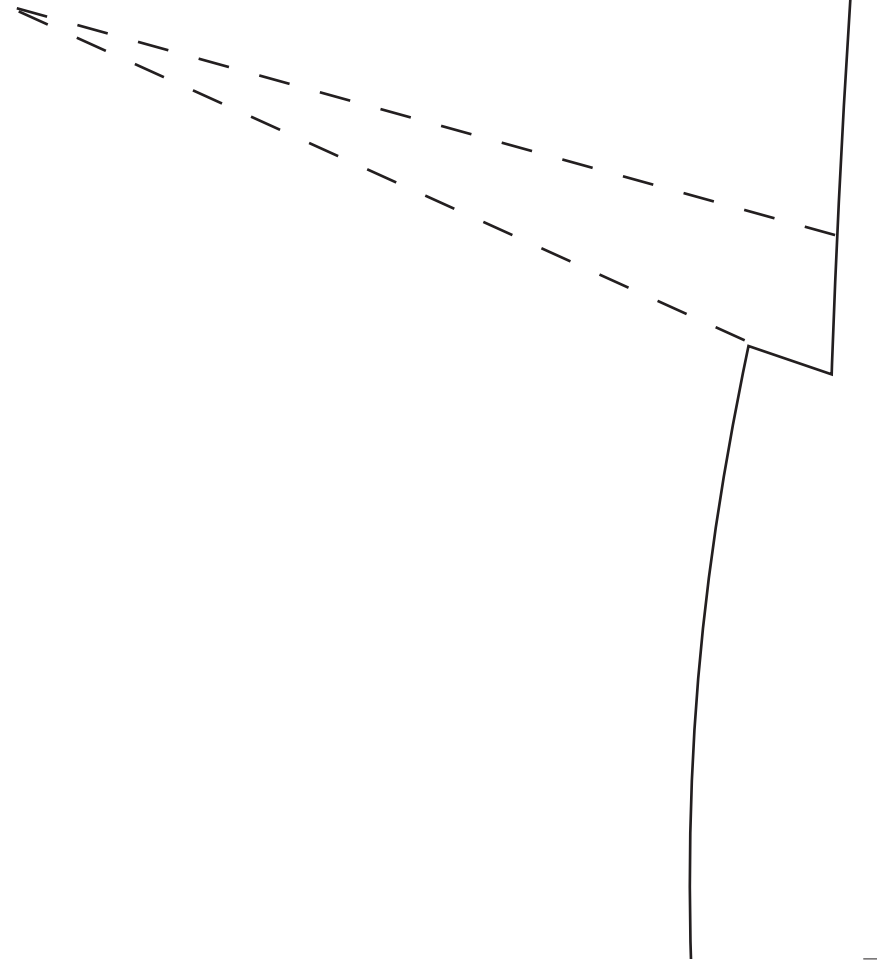
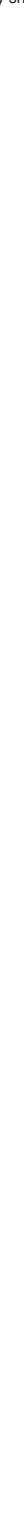
NO SEAM ALLOWANCE



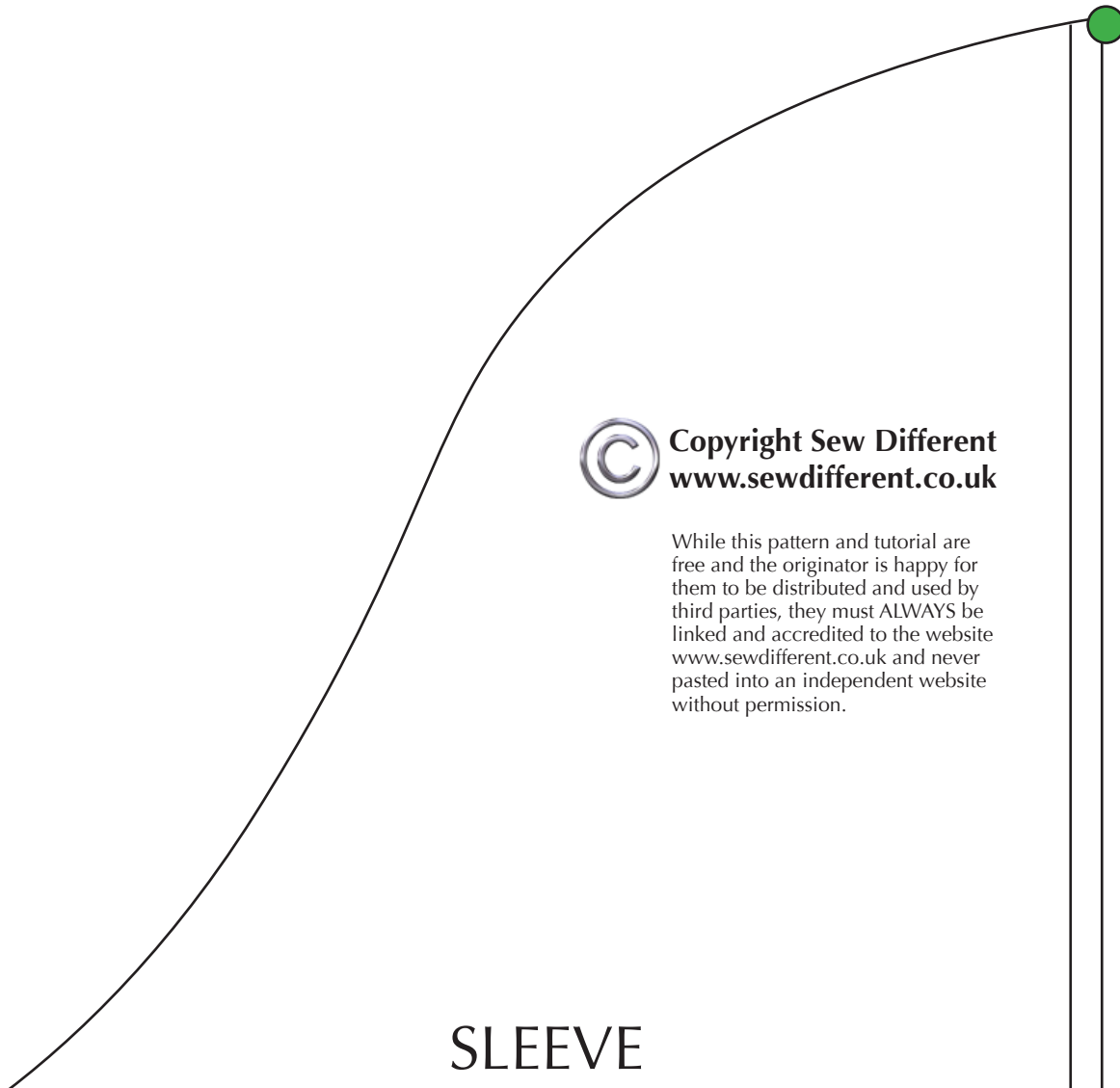
**Copyright Sew Different**  
**[www.sewdifferent.co.uk](http://www.sewdifferent.co.uk)**

While this pattern and tutorial are free and the originator is happy for them to be distributed and used by third parties, they must ALWAYS be linked and accredited to the website [www.sewdifferent.co.uk](http://www.sewdifferent.co.uk) and never pasted into an independent website without permission.

- This dashed green line (above) is where you cut if you want a lace insert.
- Sew the FRONT and the BACK of the dress together across the shoulders.
- Align the green dots on the SLEEVE and the armhole and sew each SLEEVE into each armhole
- With right sides together sew the FRONT and BACK together from the armpit down to the bottom. Then sew from the armpit along the underside of the SLEEVE.
- Gather the bottom to the SLEEVE BUBBLE to comfortably fit around the forearm.
- Fold your cuff in half lengthways with right



BOTTOM TO FIT ?CM



© Copyright Sew Different  
[www.sewdifferent.co.uk](http://www.sewdifferent.co.uk)

While this pattern and tutorial are free and the originator is happy for them to be distributed and used by third parties, they must ALWAYS be linked and accredited to the website [www.sewdifferent.co.uk](http://www.sewdifferent.co.uk) and never pasted into an independent website without permission.

SLEEVE

sides together and iron in the fold.

- With right sides together, sew the SLEEVE BUBBLE to the CUFF.
- Finish the neckline with bias binding and hem the bottom.

BACK

PARTY SHIFT

Cut 2

NO SEAM ALLOWANCE



FOLD

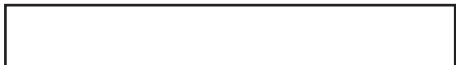
FRONT  
PARTY SHIFT  
Cut 1 on  
folded fabric  
NO SEAM ALLOWANCE

# PARTY SHIFT

Cut 2 on  
folded fabric

NO SEAM ALLOWANCE

BOTTOM OF SLEEVE







## CUFF PARTY SHIFT Cut 2

NOTE: The length of this cuff needs to comfortably fit around your forearm. Adjust to suit your size.



**Copyright Sew Different**  
**[www.sewdifferent.co.uk](http://www.sewdifferent.co.uk)**

While this pattern and tutorial are free and the originator is happy for them to be distributed and used by third parties, they must ALWAYS be linked and accredited to the website [www.sewdifferent.co.uk](http://www.sewdifferent.co.uk) and never pasted into an independent website without permission.



While this pattern and tutorial are free and the originator is happy for them to be distributed and used by third parties, they must ALWAYS be linked and accredited to the website [www.sewdifferent.co.uk](http://www.sewdifferent.co.uk) and never pasted into an independent website without permission.

