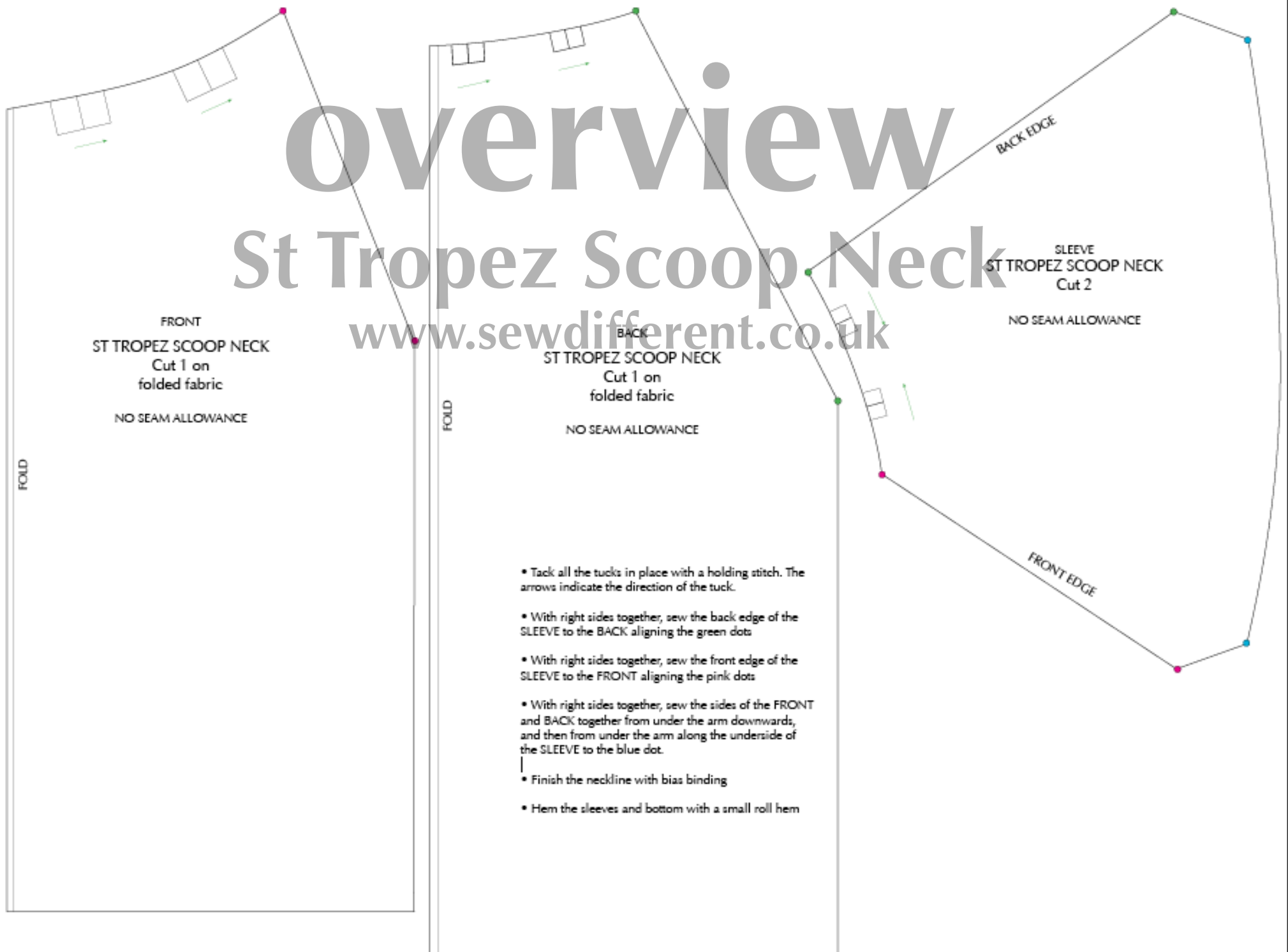
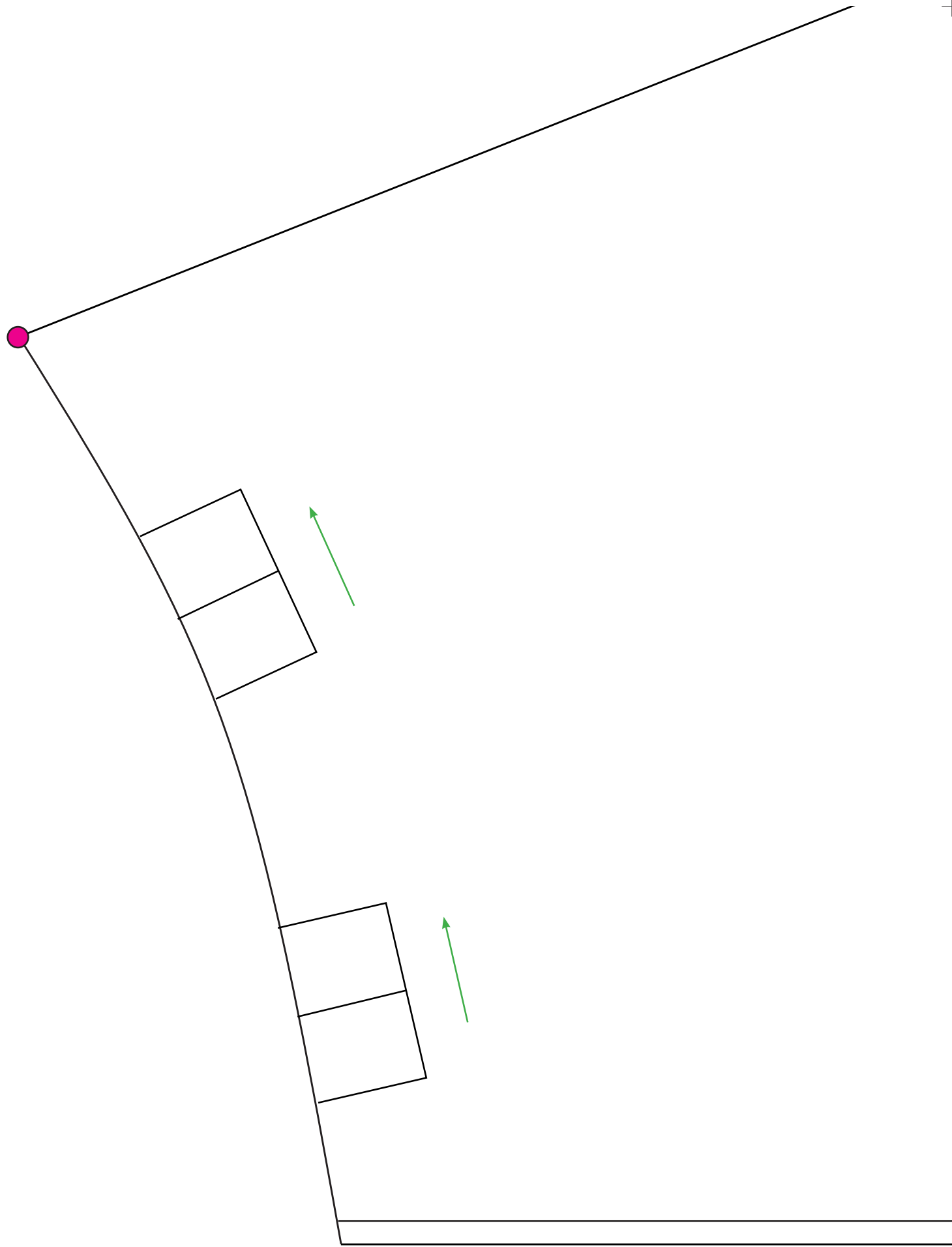


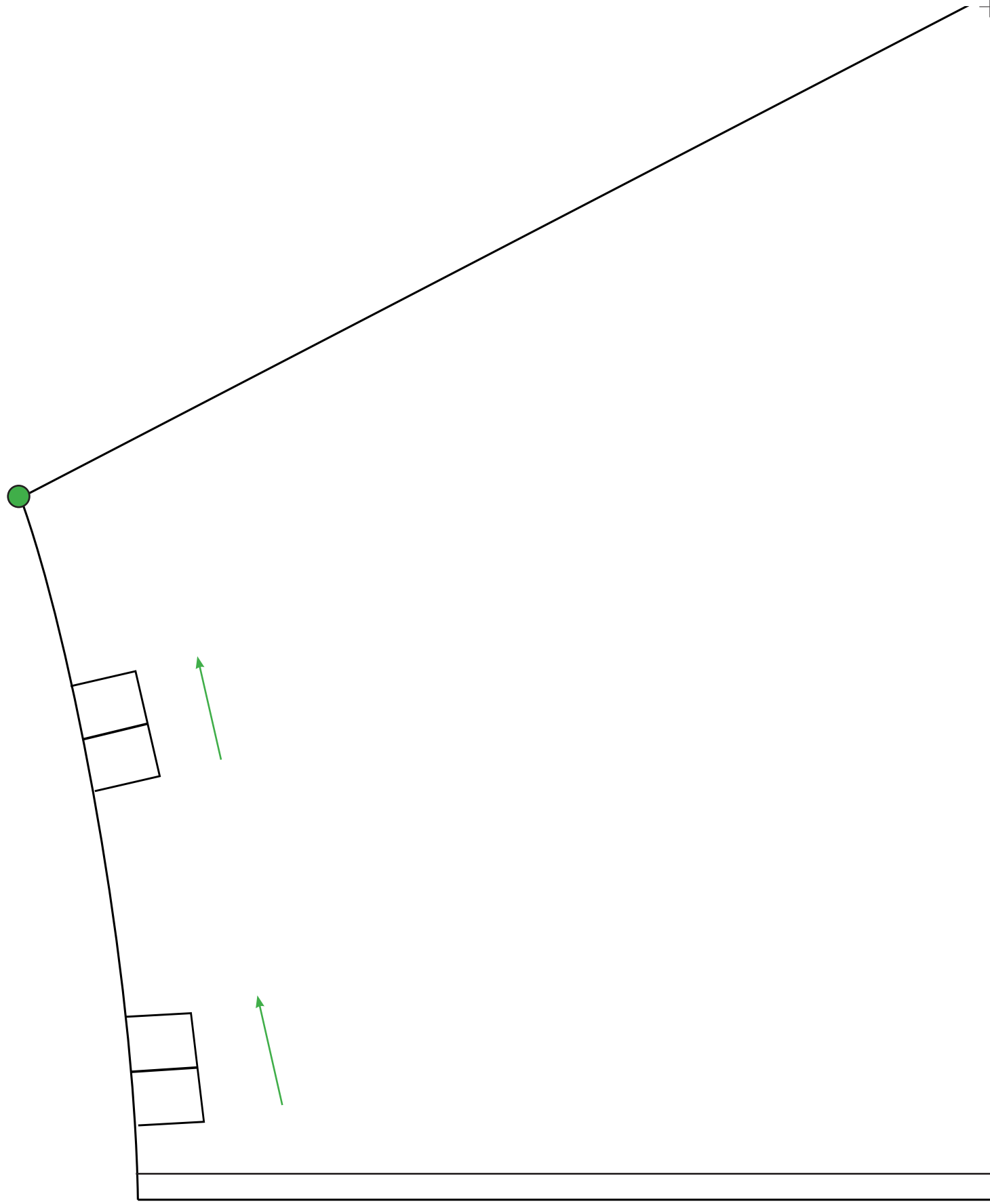
# overview

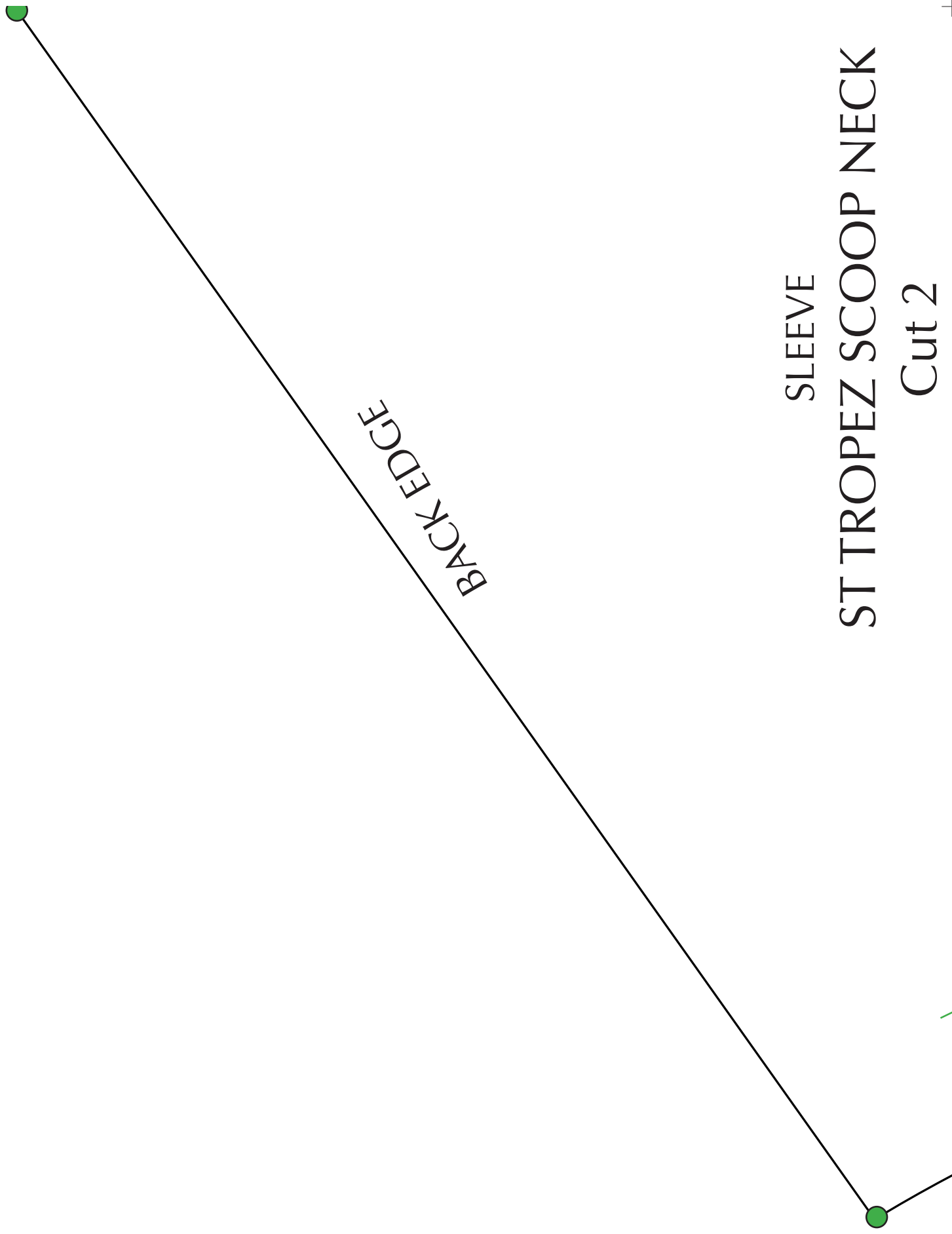
## St Tropez Scoop Neck

[www.sewdifferent.co.uk](http://www.sewdifferent.co.uk)







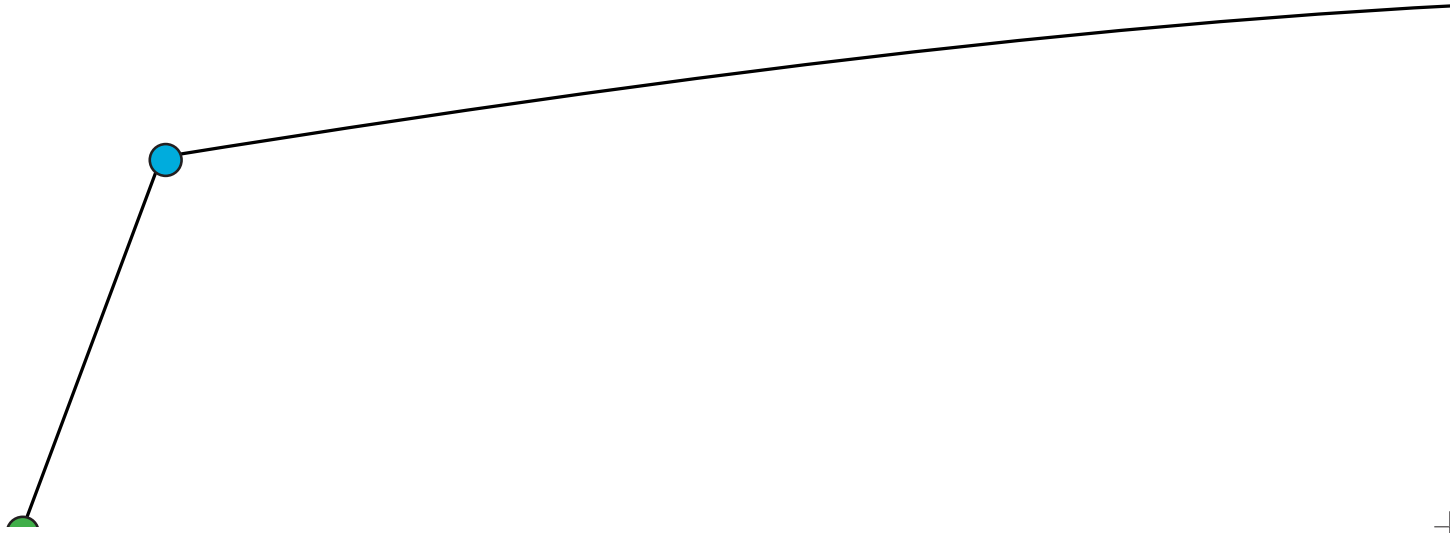


BACK EDGE

SLEEVE

ST TROPEZ SCOOP NECK

Cut 2



FRONT

ST TROPEZ SCOOP NECK

Cut 1 on

folded fabric

NO SEAM ALLOWANCE

FOLD

BACK

# ST TROPEZ SCOOP NECK

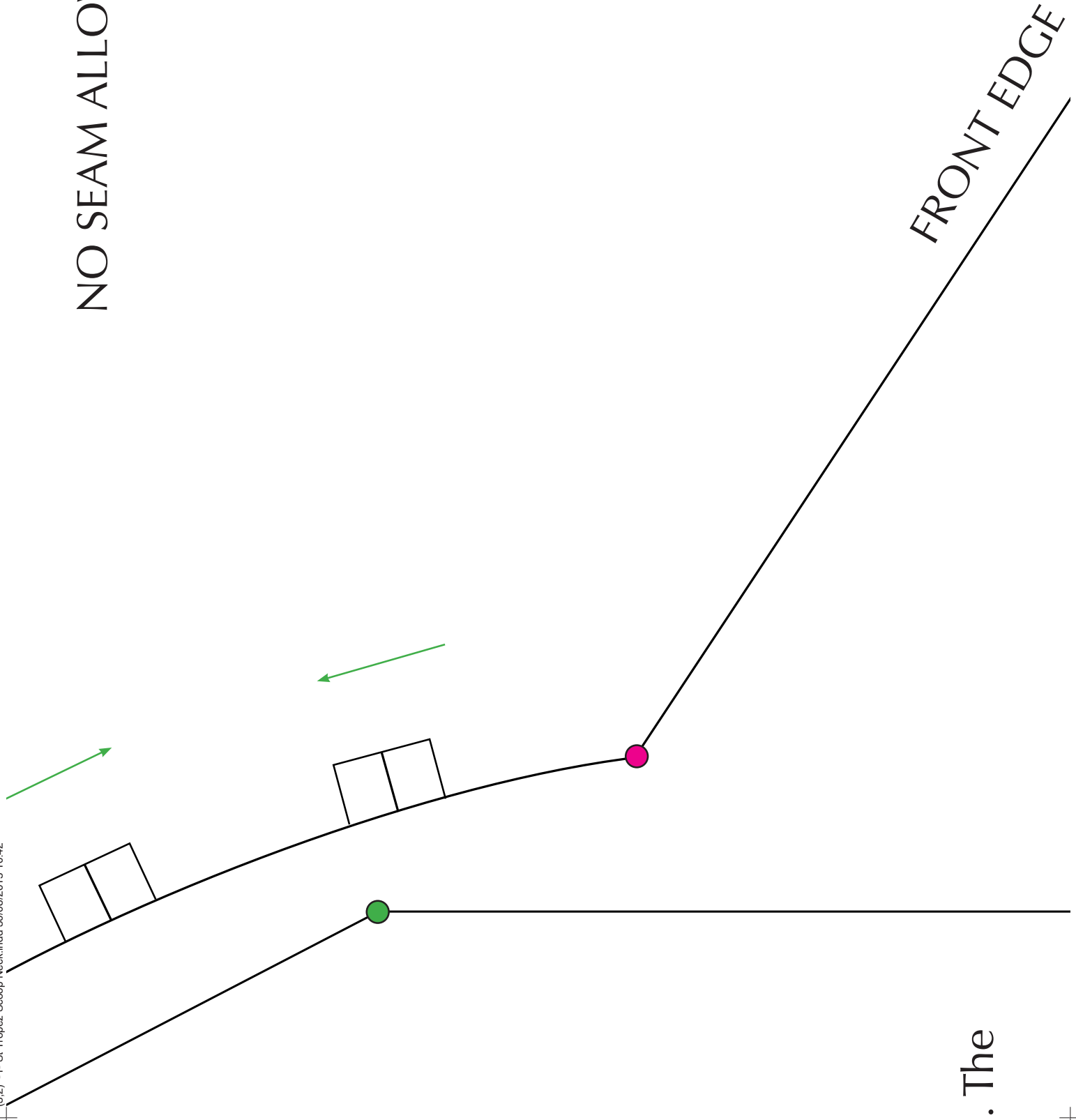
Cut 1 on  
folded fabric

NO SEAM ALLOWANCE

FOLD

- Tack all the tucks in place with a holding stitch arrows indicate the direction of the tuck.

NO SEAM ALLOWANCE



. The







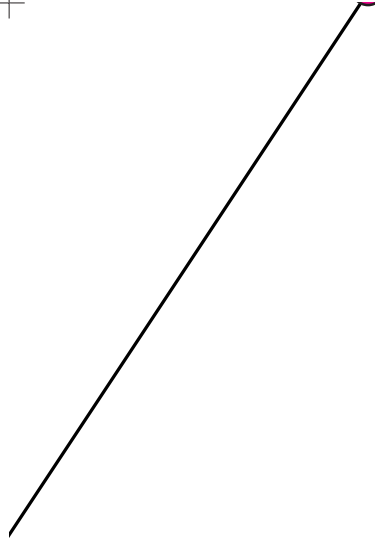
- With right sides together, sew the back edge of SLEEVE to the BACK aligning the green dots
- With right sides together, sew the front edge of SLEEVE to the FRONT aligning the pink dots
- With right sides together, sew the sides of the F and BACK together from under the arm downward and then from under the arm along the underside the SLEEVE to the blue dot.
- Finish the neckline with bias binding
- Hem the sleeves and bottom with a small roll r

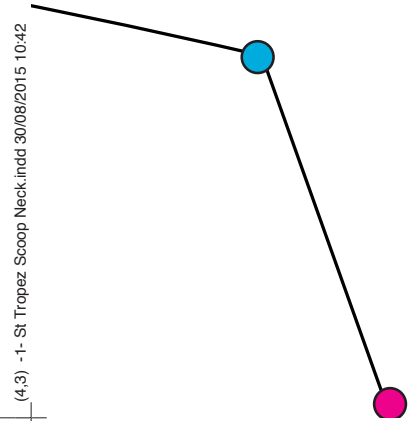
the

the

RONT  
rds,  
of

rem





(4,3) -1- St Tropez Scoop Neck Indd 30/09/2015 10:42









