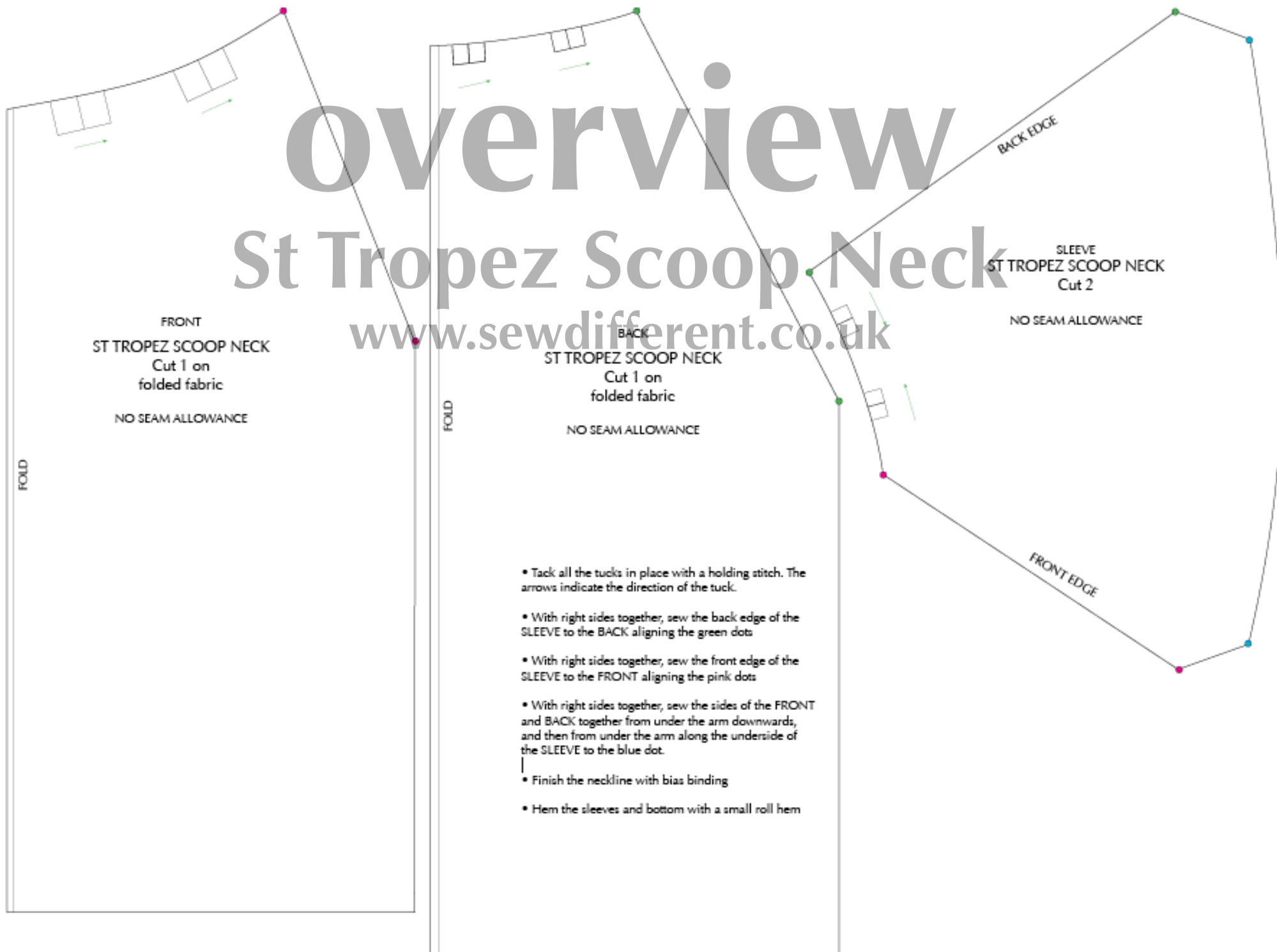
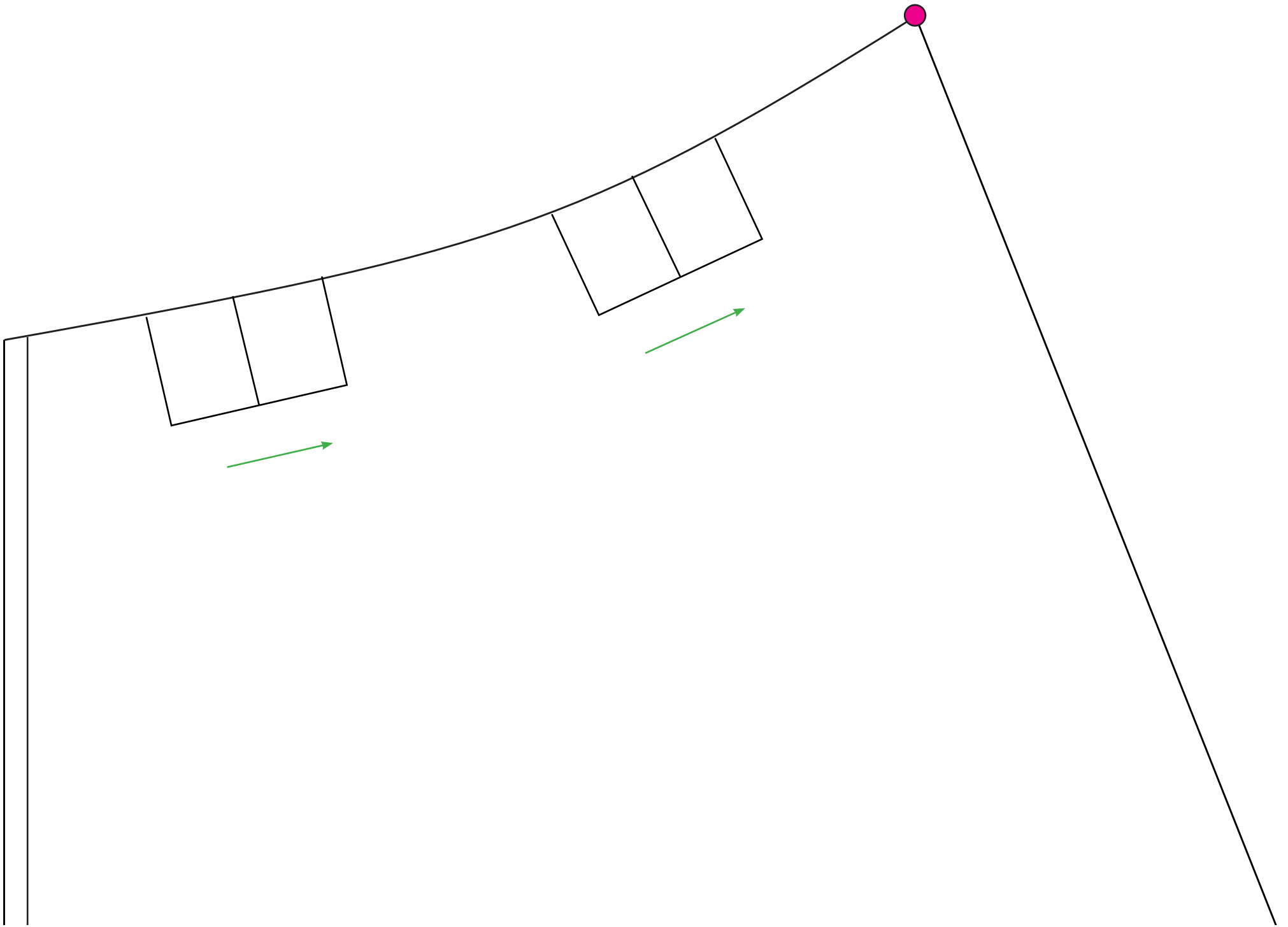


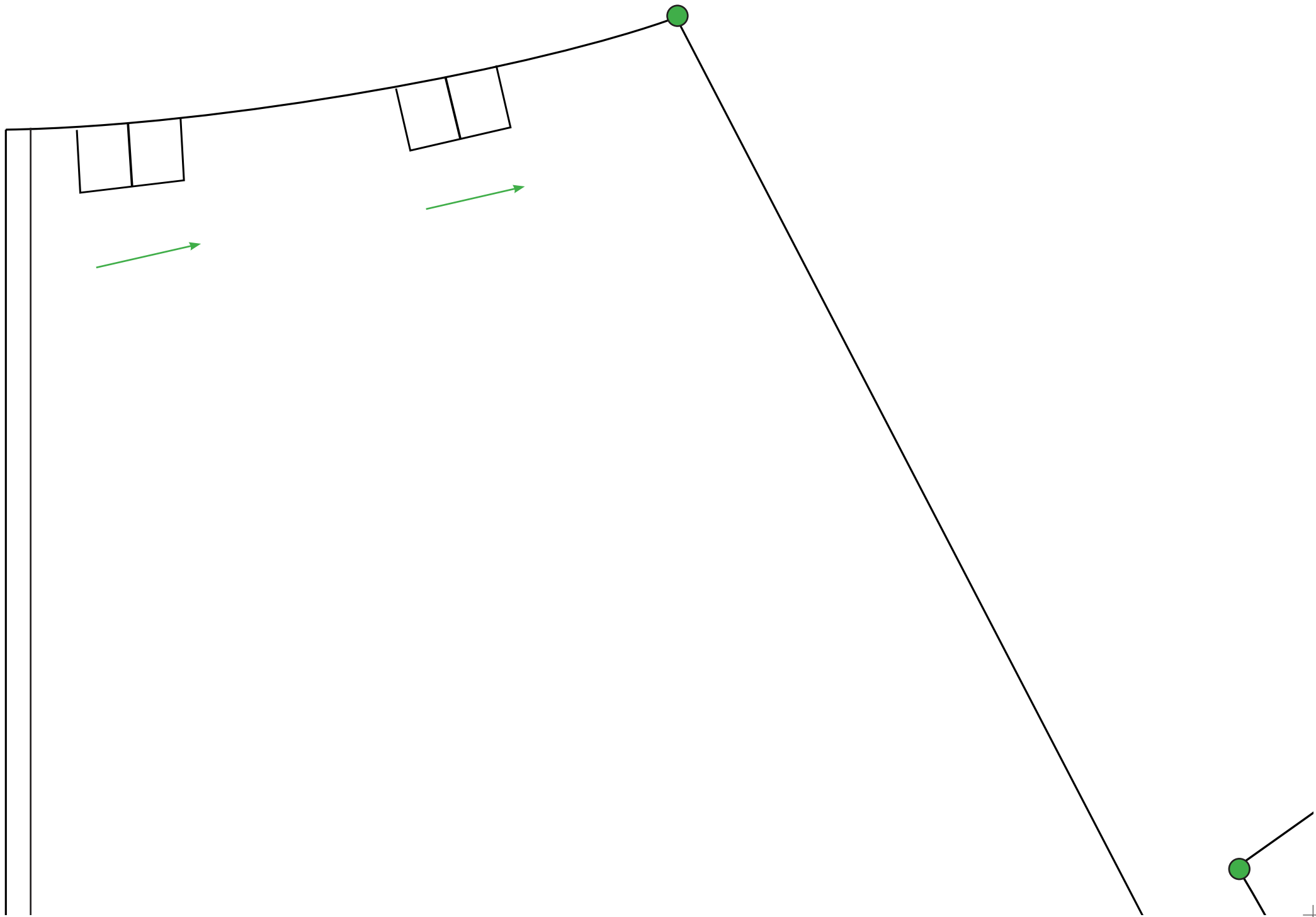
overview

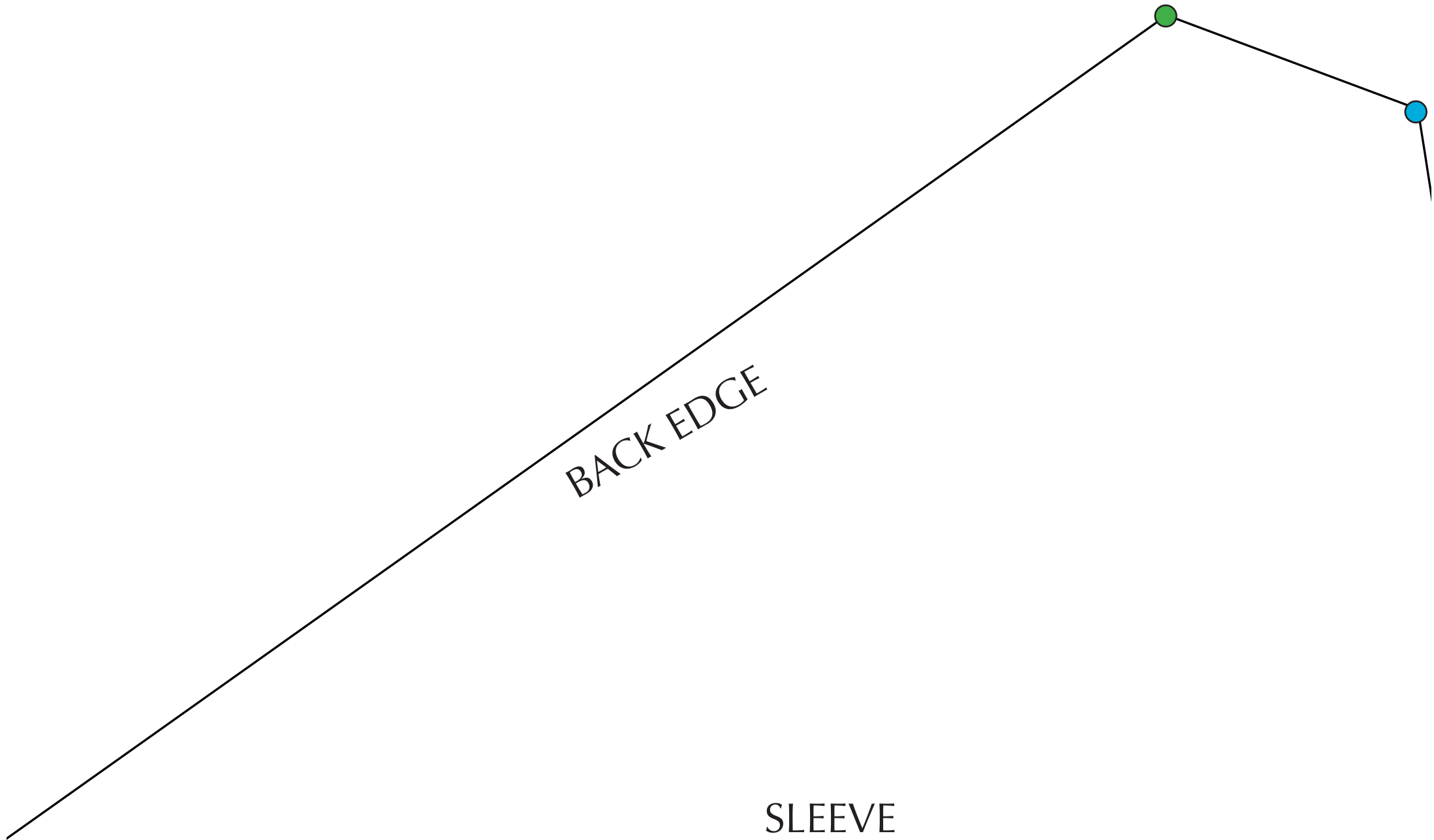
St Tropez Scoop Neck

www.sewdifferent.co.uk



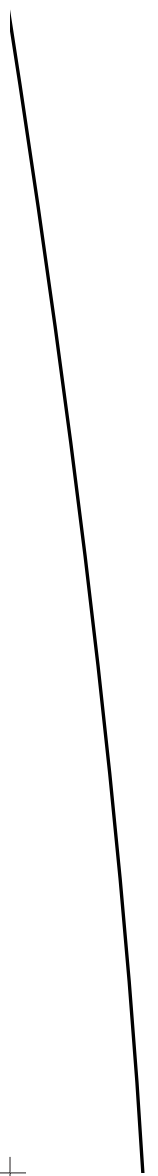






BACK EDGE

SLEEVE
ST TROPEZ SCOOP NECK
Cut 2



FOLD

FRONT
ST TROPEZ SCOOP NECK

Cut 1 on
folded fabric

NO SEAM ALLOWANCE



FOLD

BACK

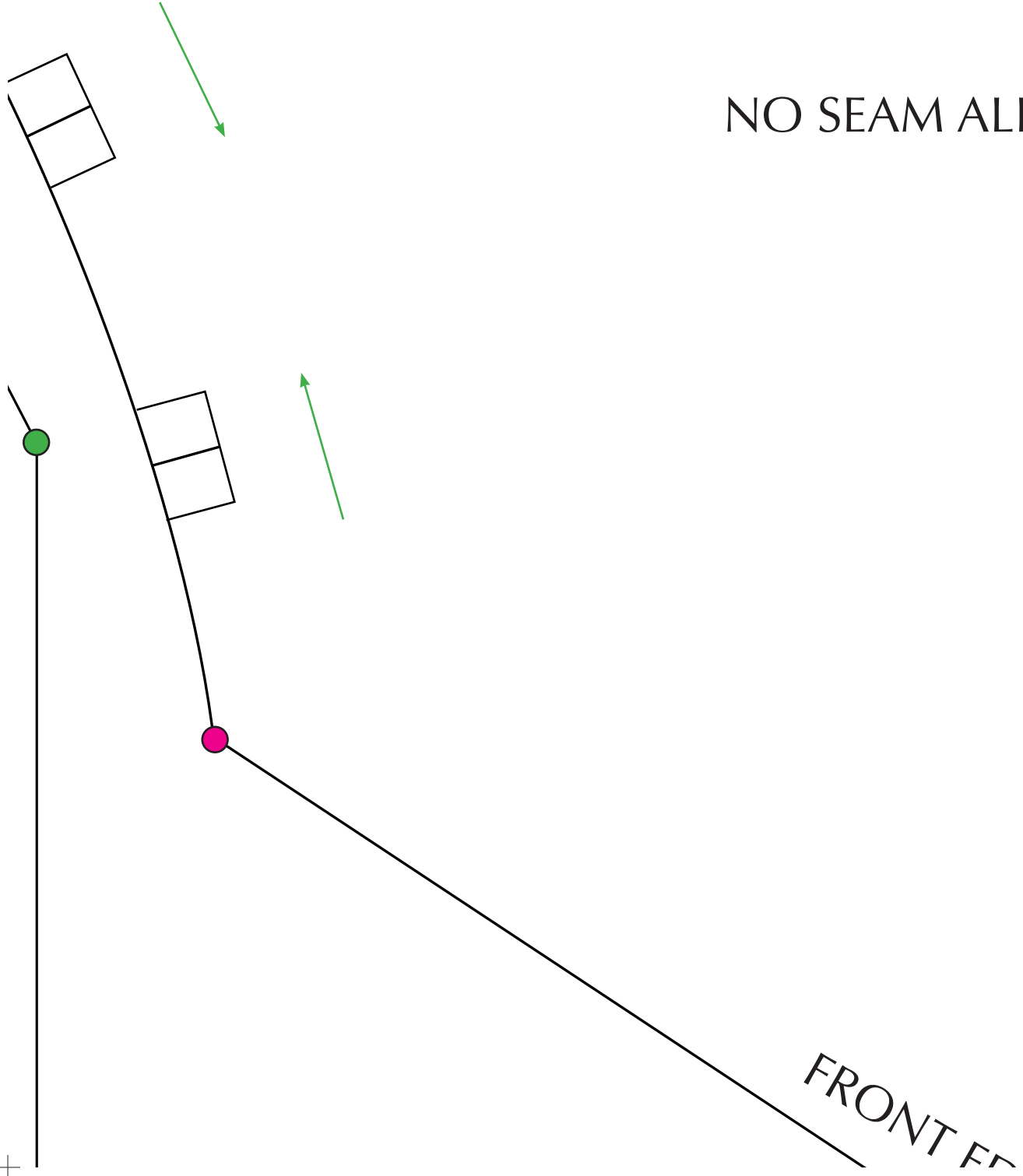
ST TROPEZ SCOOP NECK

Cut 1 on
folded fabric

NO SEAM ALLOWANCE

- Tack all the tucks in place with a holding stitch. The

NO SEAM ALLOWANCE





arrows indicate the direction of the tuck.

- With right sides together, sew the back edge of the SLEEVE to the BACK aligning the green dots
- With right sides together, sew the front edge of the SLEEVE to the FRONT aligning the pink dots
- With right sides together, sew the sides of the FRONT and BACK together from under the arm downwards, and then from under the arm along the underside of the SLEEVE to the blue dot.
- Finish the neckline with bias binding
- Hem the sleeves and bottom with a small roll hem

EDGE

