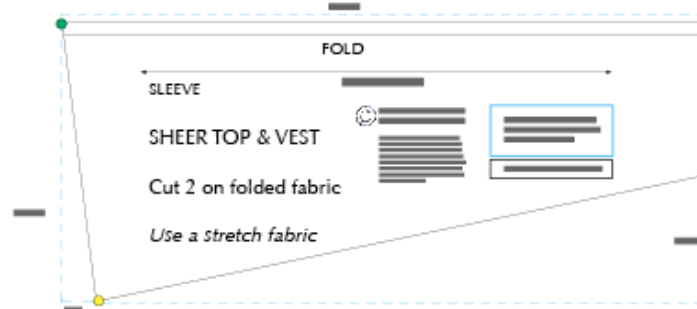
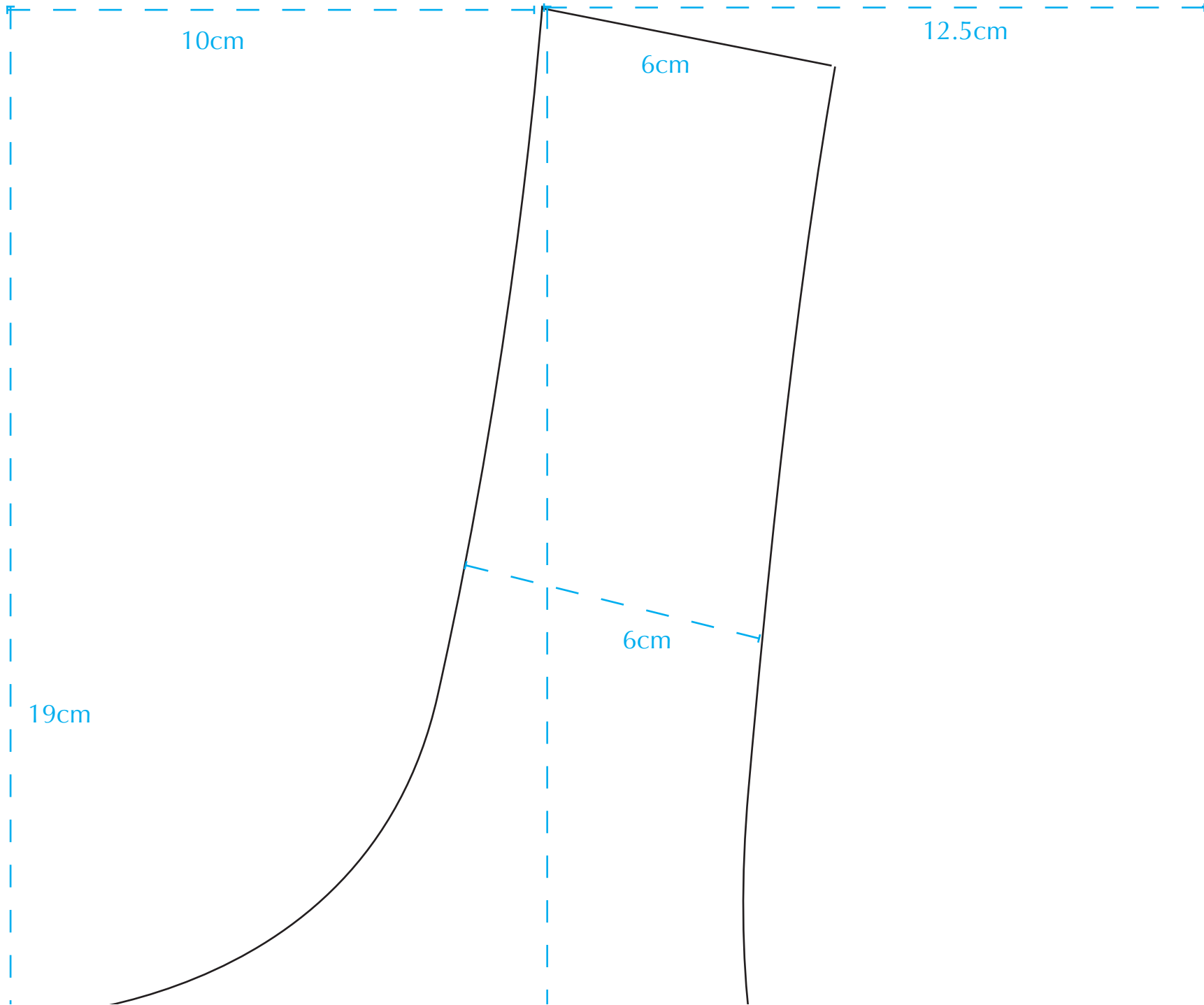


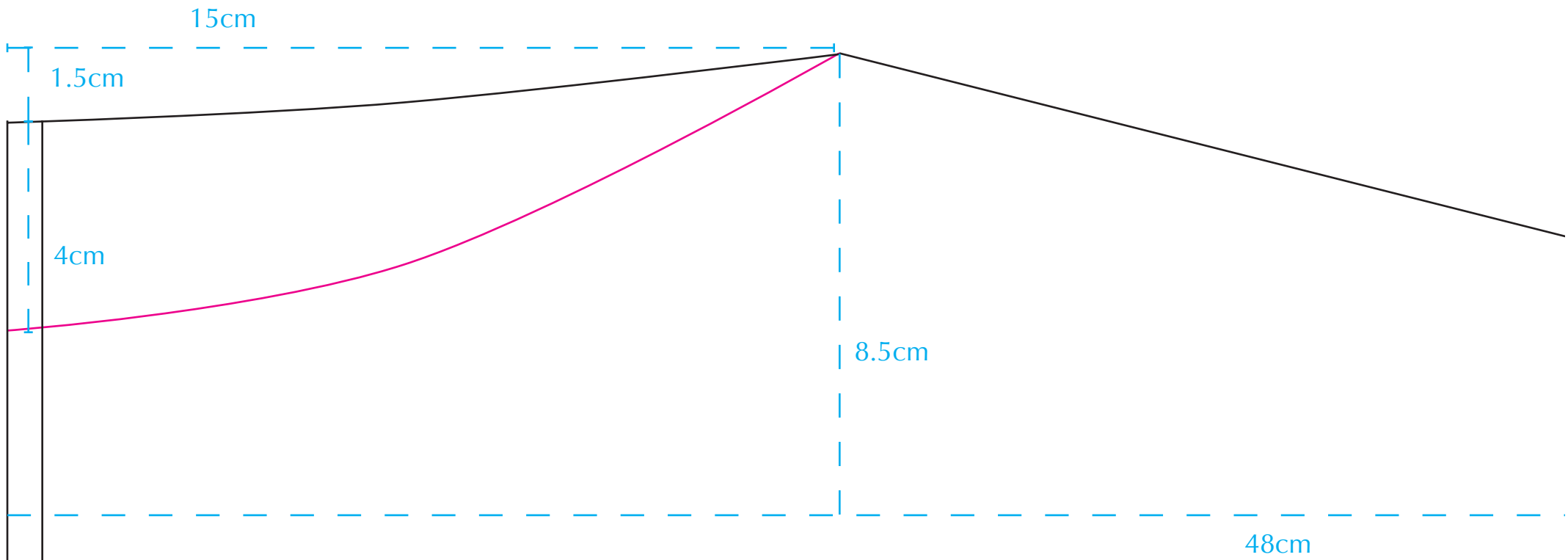
# overview

## sheer top & vest

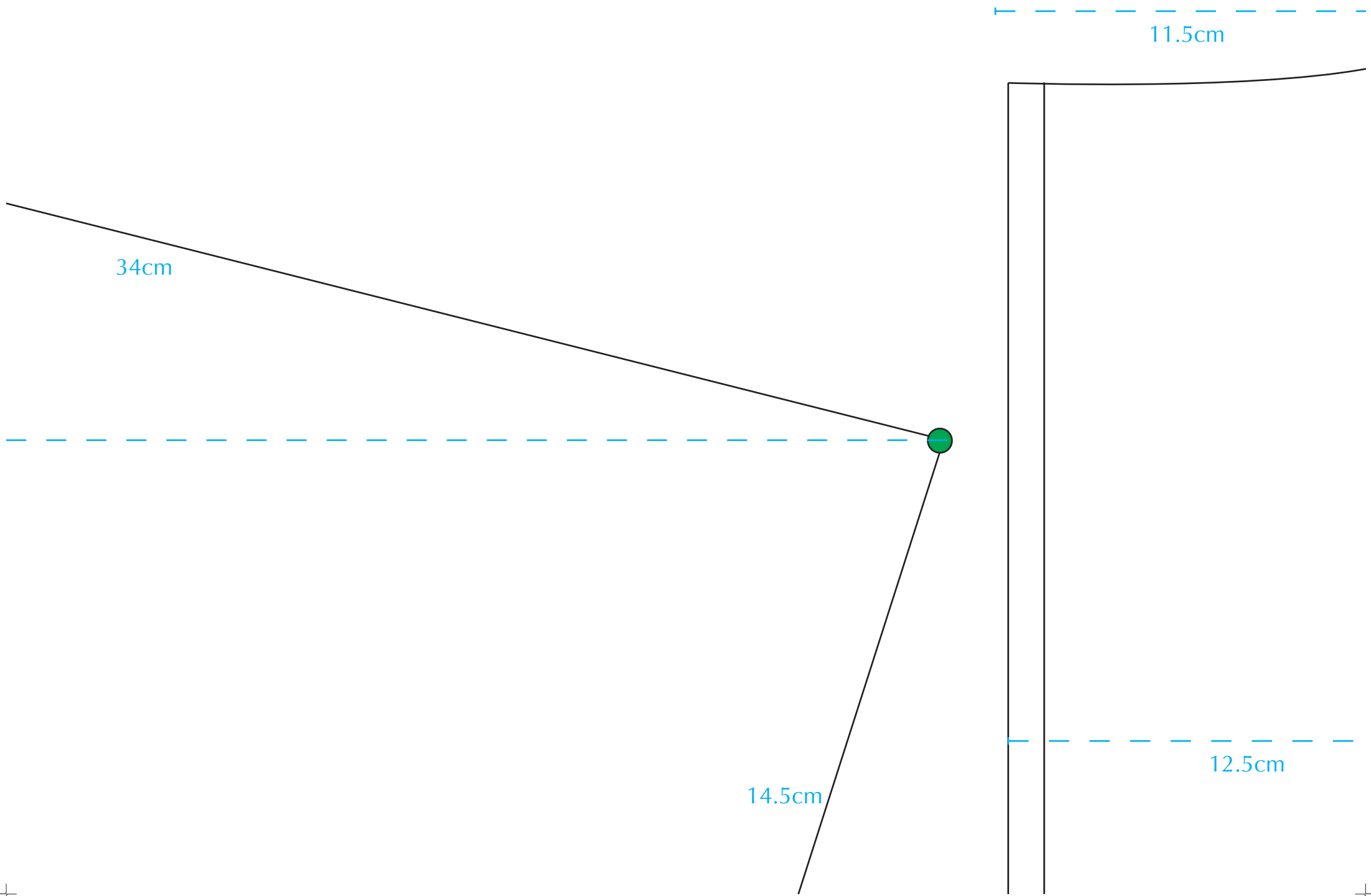
[www.sewdifferent.co.uk](http://www.sewdifferent.co.uk)

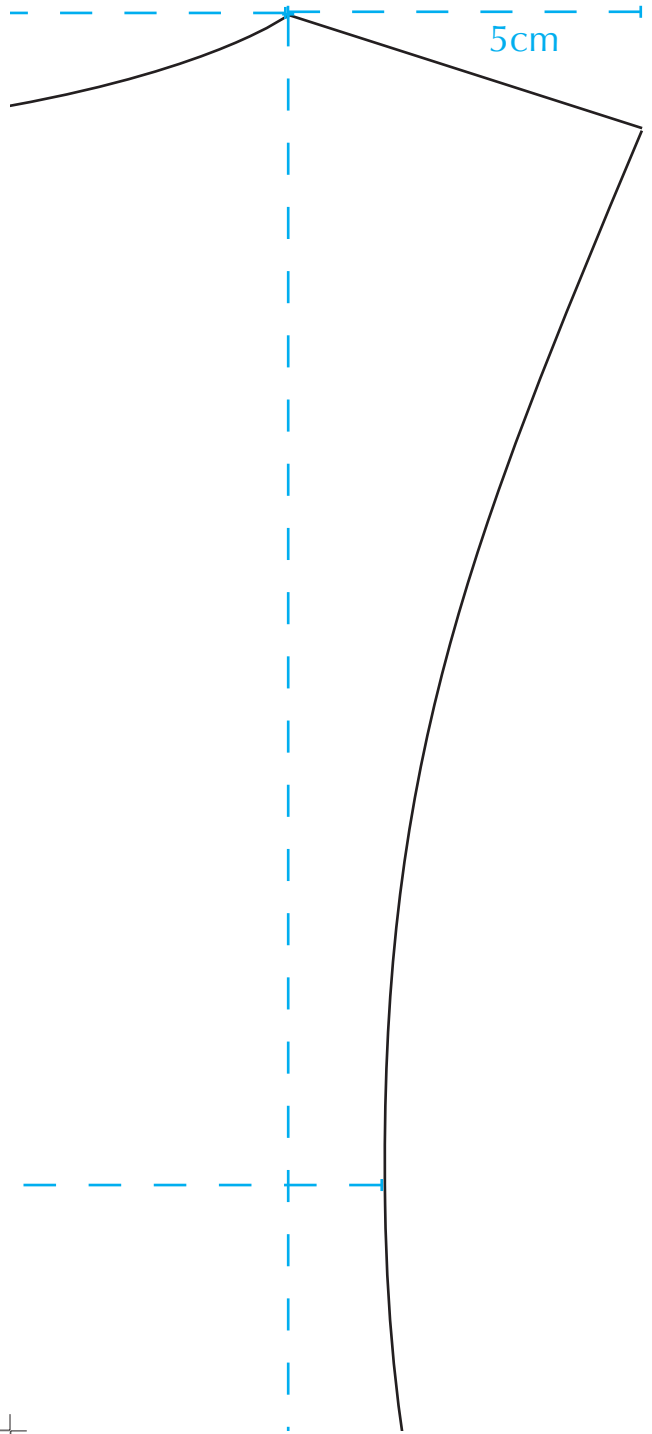






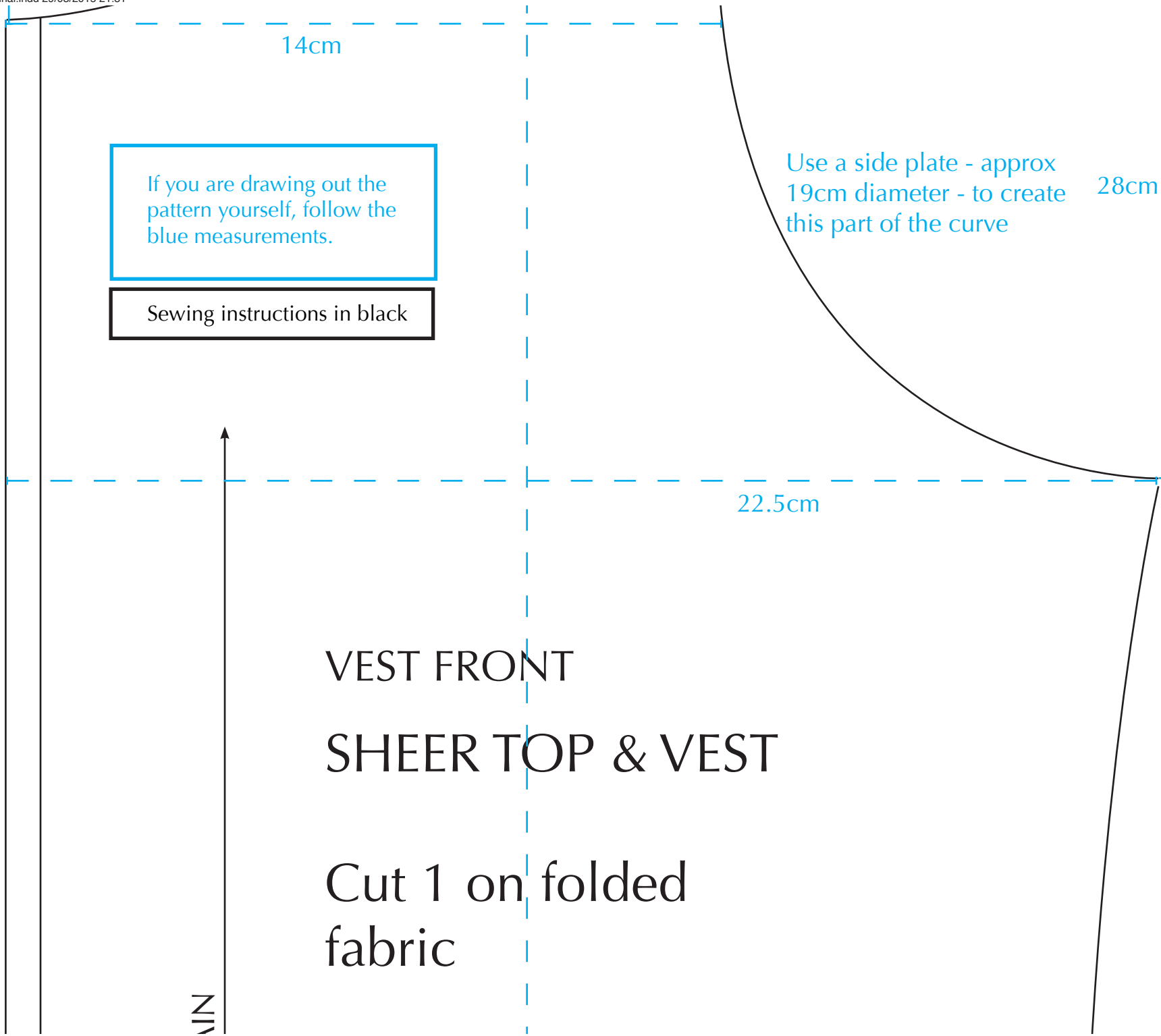
If you are drawing out the pattern yourself, follow the blue measurements.





28.5cm





14cm

If you are drawing out the pattern yourself, follow the blue measurements.

Sewing instructions in black

Use a side plate - approx 19cm diameter - to create this part of the curve

28cm

22.5cm

VEST FRONT

SHEER TOP & VEST

Cut 1 on folded fabric



Sewing instructions in black

43.5cm

53cm

FOLD

FABRIC GRAIN

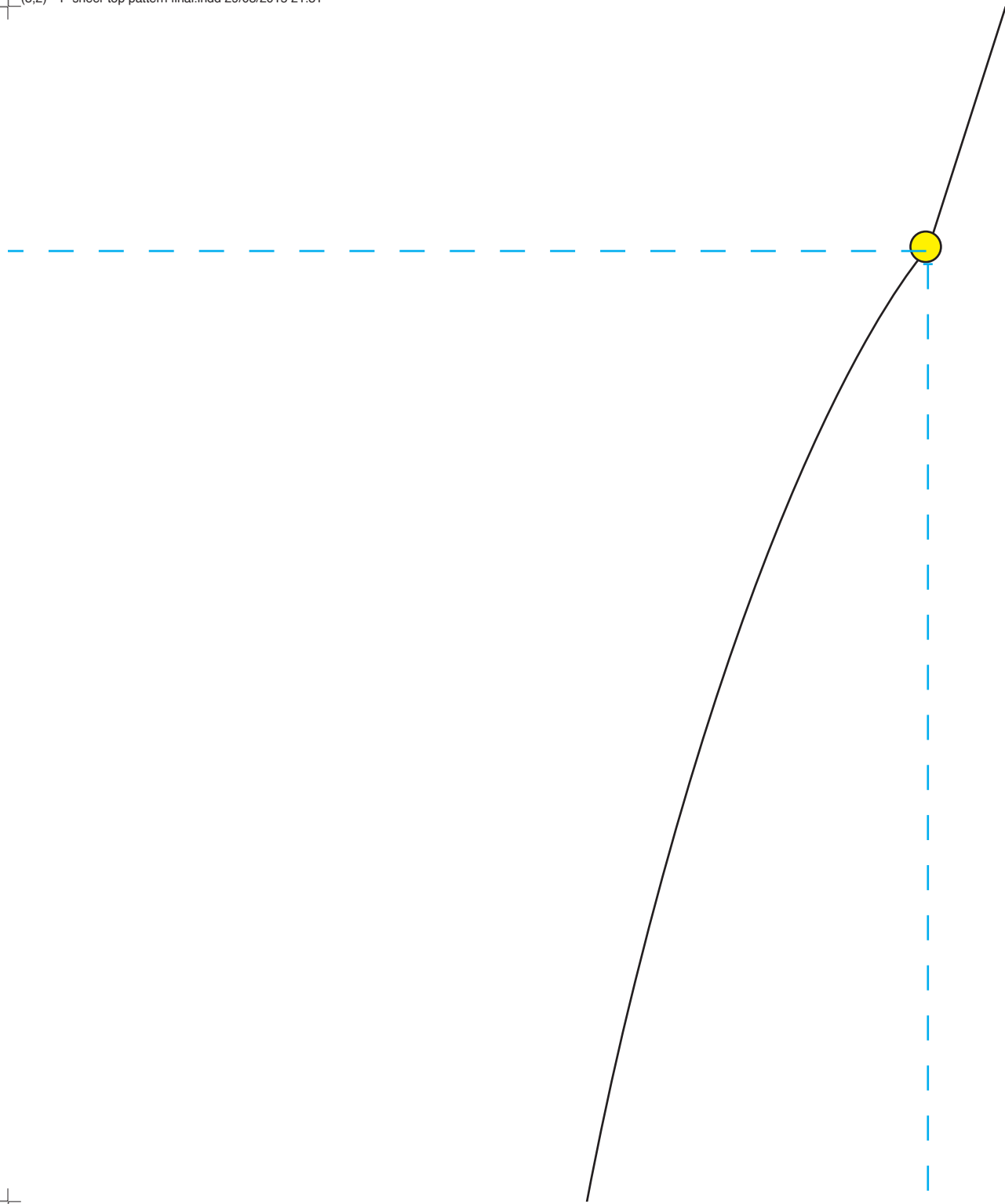


Copyright Sew Different  
[www.sewdifferent.co.uk](http://www.sewdifferent.co.uk)

While this pattern and tutorial are free and the originator is happy for them to be distributed and used by third parties, they must ALWAYS be linked and accredited to the website [www.sewdifferent.co.uk](http://www.sewdifferent.co.uk) and never pasted into an independent website without permission.

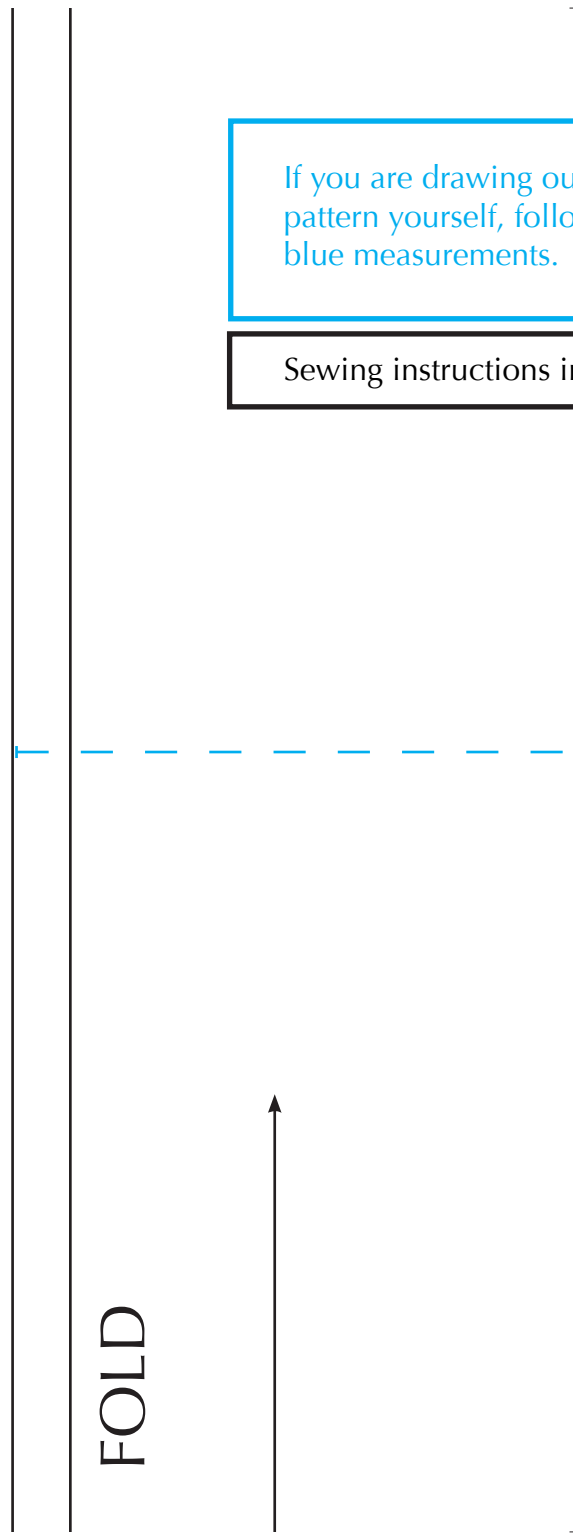
SHEER TOP  
FRONT & BACK

SHEER TOP & VEST



If you are drawing out pattern yourself, follow blue measurements.

Sewing instructions in



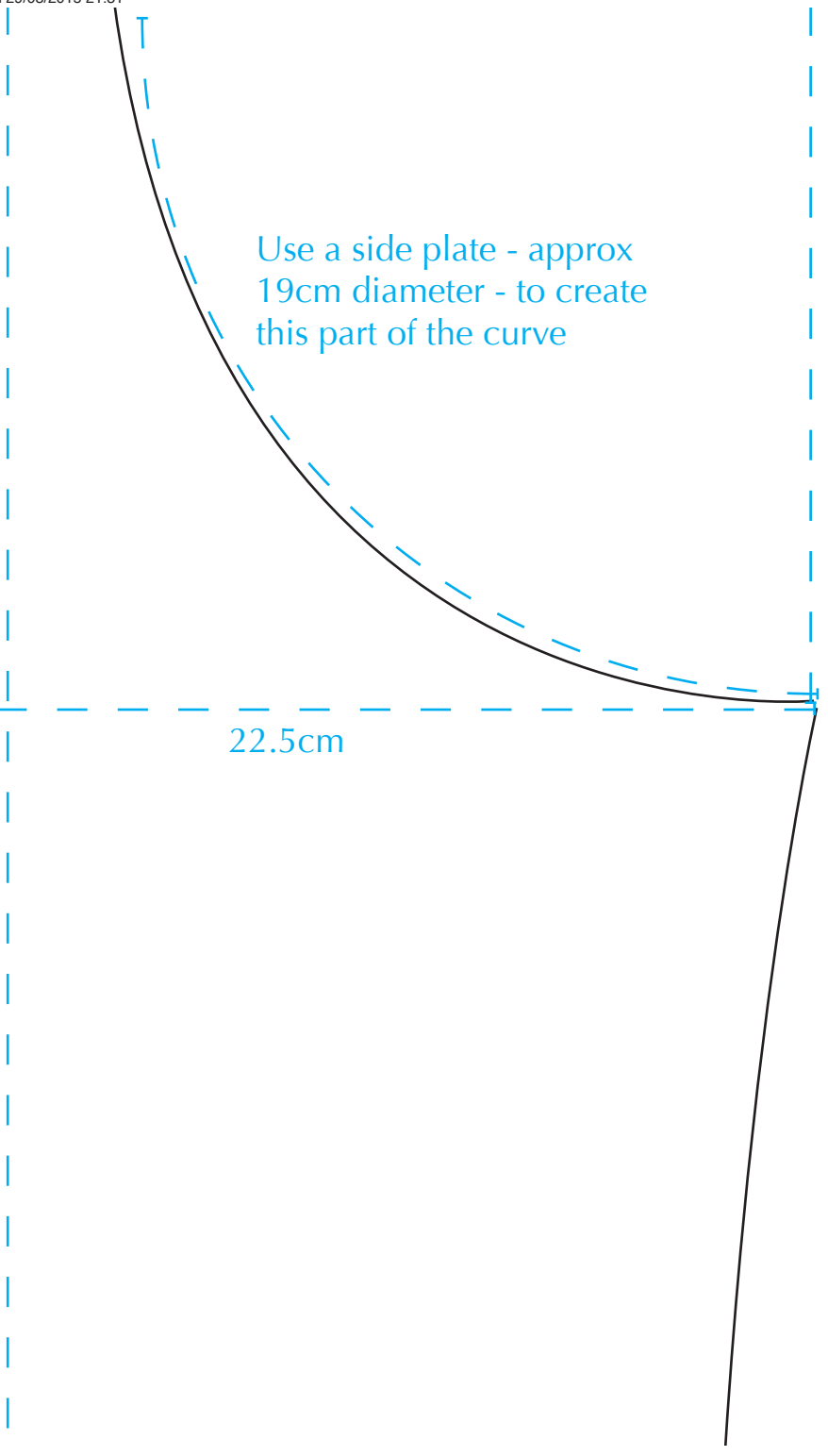


the  
v the

black

Use a side plate - approx  
19cm diameter - to create  
this part of the curve

22.5cm



# Use a stretch fabric



Copyright Sew Different  
[www.sewdifferent.co.uk](http://www.sewdifferent.co.uk)

While this pattern and tutorial are free and the originator is happy for them to be distributed and used by third parties, they must ALWAYS be linked and accredited to the website [www.sewdifferent.co.uk](http://www.sewdifferent.co.uk) and never pasted into an independent website without permission.

FABRIC GRA

FOLD

21cm

75.5cm

**TO PRINT THIS PATTERN:**

**PRINT**

**In Page Handling:**

**Page scaling - Tile large pages**

Cut 2 on  
folded fabric

*Use a sheer fabric*

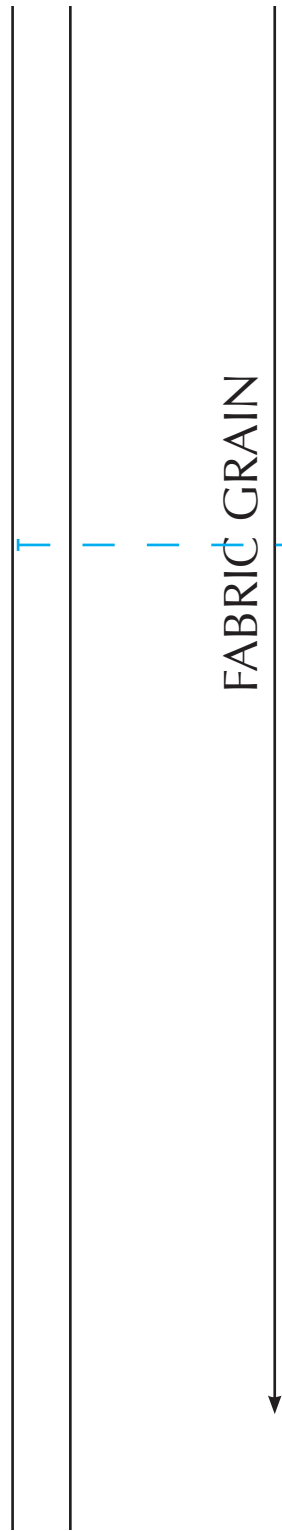
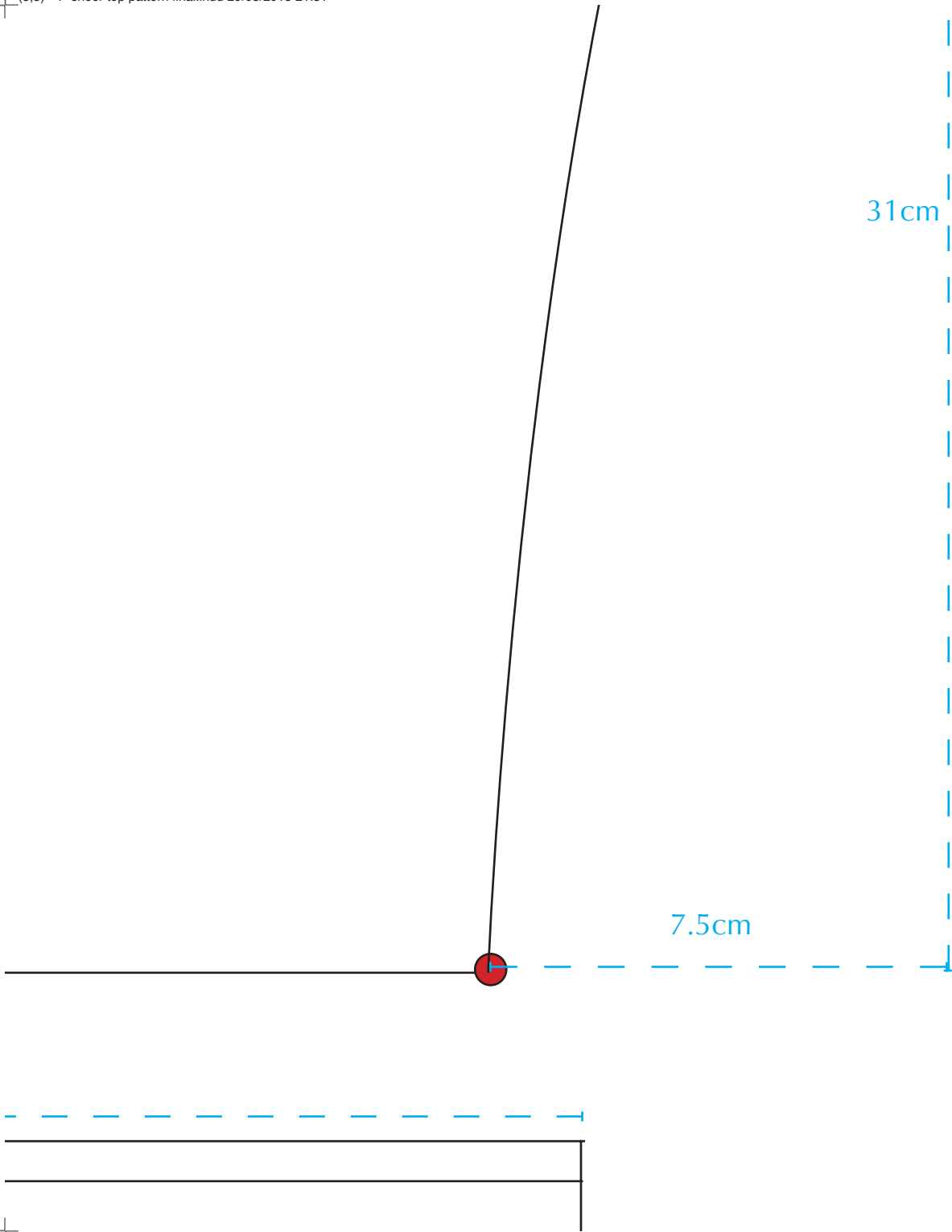


36cm

33.5cm



FOLD



VEST E  
SHEE

Cut 1

*Use a*

© Copyright  
www.se

While this  
free and th  
them to be  
third partie  
linked and  
www.sewd  
pasted into  
without pe

BACK

FRONT TOP & VEST

on folded fabric

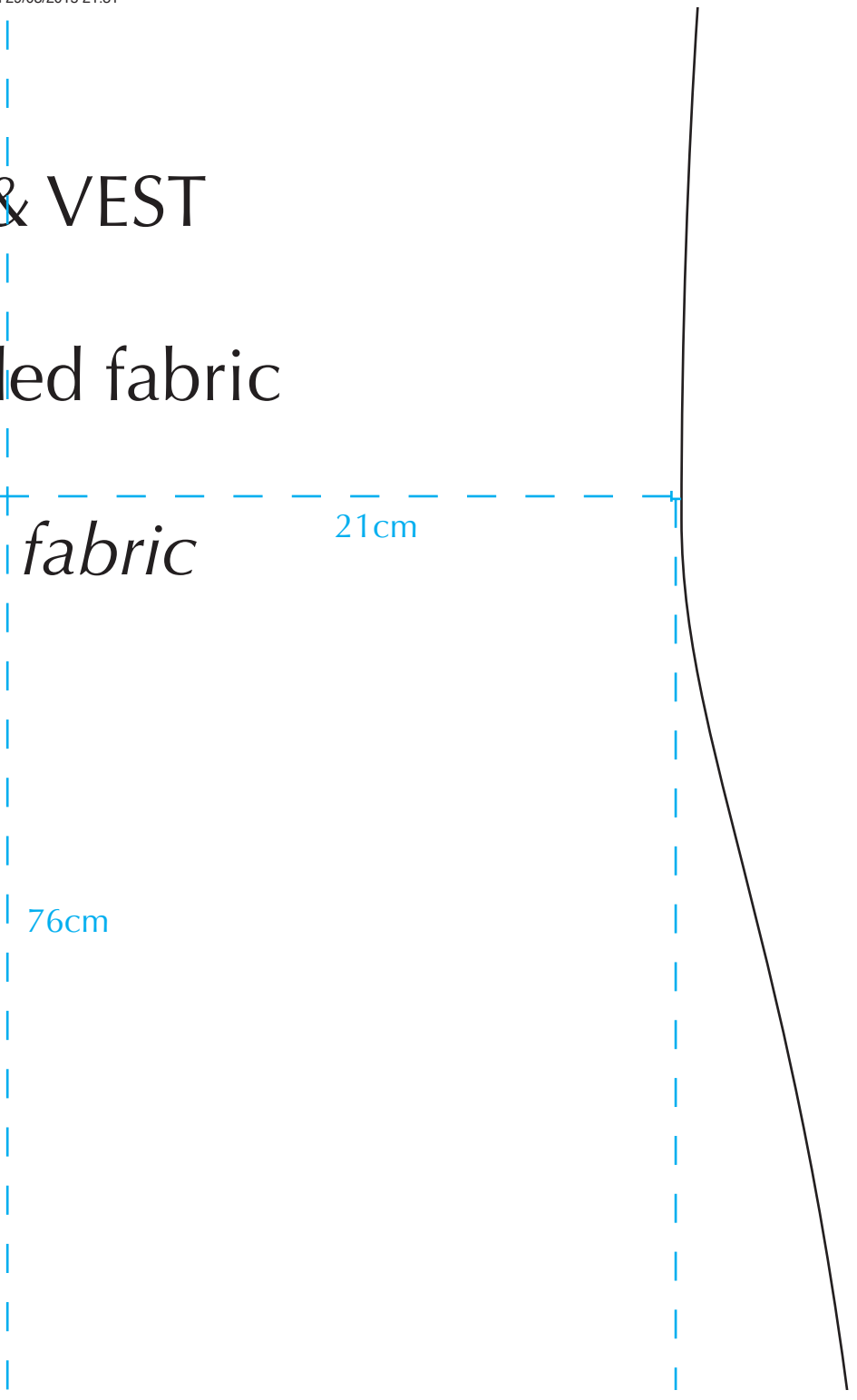
on a stretch fabric

21cm

76cm

might Sew Different  
sewdifferent.co.uk

pattern and tutorial are  
the originator is happy for  
distributed and used by  
others, they must ALWAYS be  
credited to the website  
sewdifferent.co.uk and never  
as an independent website  
without permission.



Page scanning - the large pages

Tile scale - 100%

Overlap - 0

30cm

On one of the SHEER TOP pieces, cut along the pink line to create the front neck scoop.

Sew together the SHEER TOP FRONT and SHEER TOP BACK along the shoulder seams.

Sew each of the SLEEVES to the SHEER TOP joining the green and yellow dots.

Sew the FRONT and BACK SHEER TOP together long the side seams all the way from the red dots to the blue dots.

Sew the VEST FRONT and VEST BACK together along the shoulder seams and then along the side seams.

Hem sleeve cuffs with a small zigzag (to allow stretch as it is put on.)

Hem all other raw edges with a small running stitch.

24.5cm



SLEEVE

FABRIC GRAIN

# SHEER TOP & VEST

Cut 2 on folded fabric

*Use a stretch fabric*



Copyright Sew Different  
[www.sewdifferent.co.uk](http://www.sewdifferent.co.uk)

While this pattern and tutorial are free and the originator is happy for them to be distributed and used by third parties, they must ALWAYS be linked and accredited to the website [www.sewdifferent.co.uk](http://www.sewdifferent.co.uk) and never pasted into an independent website without permission.

If you  
patter  
blue

Sewir

14.5cm

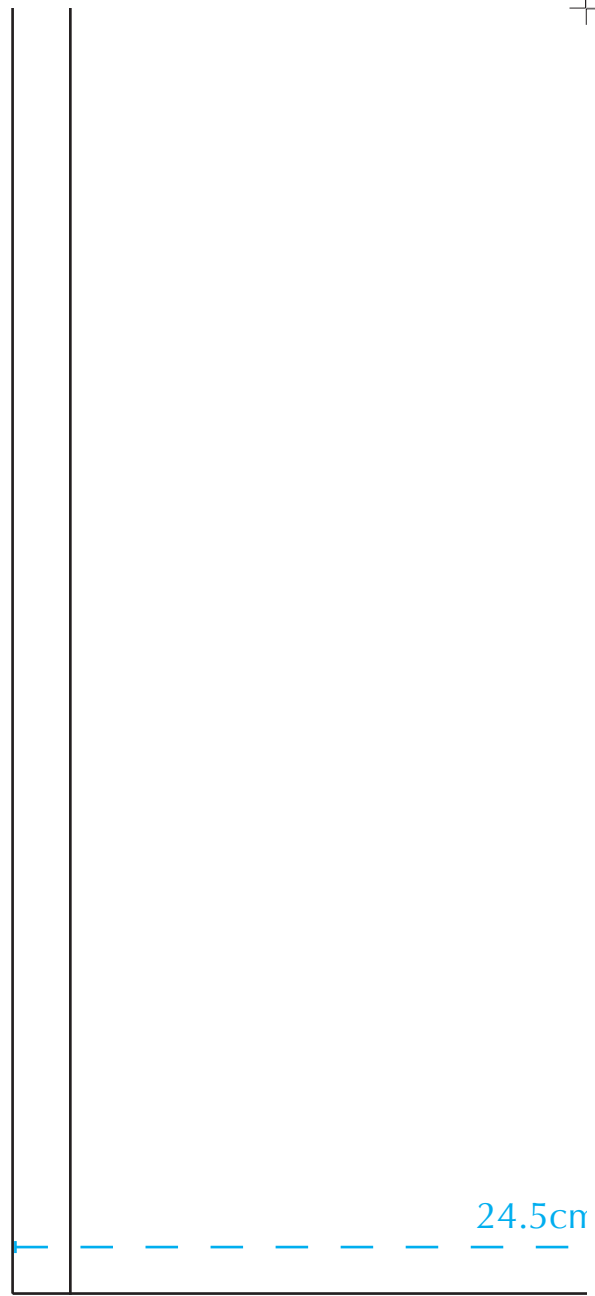
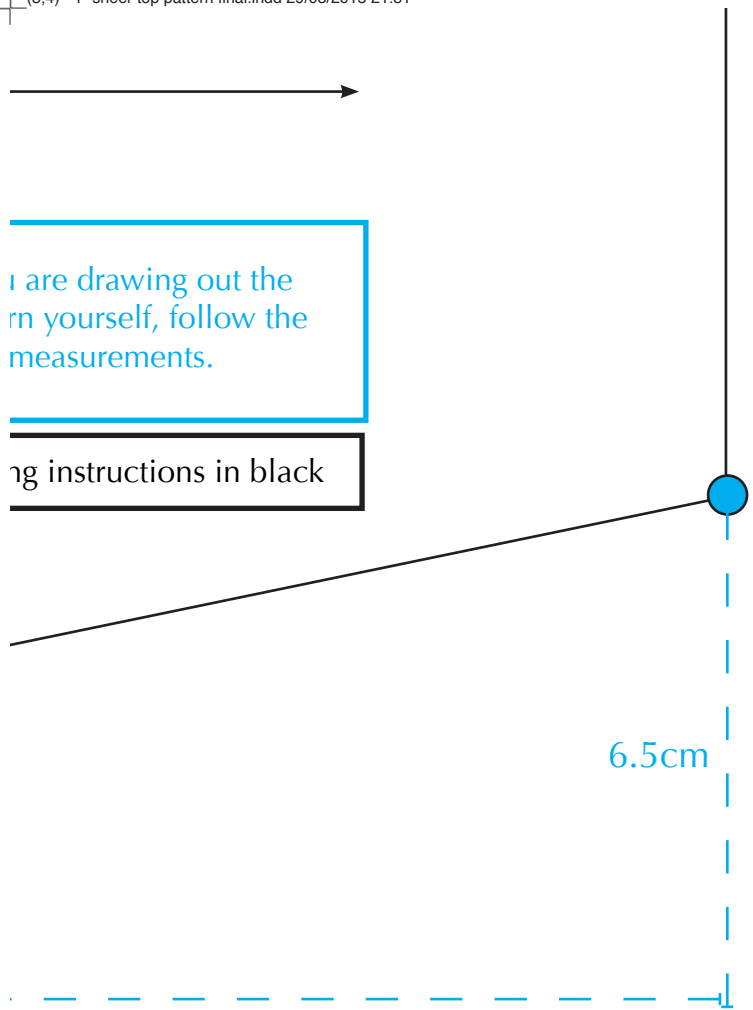
2cm



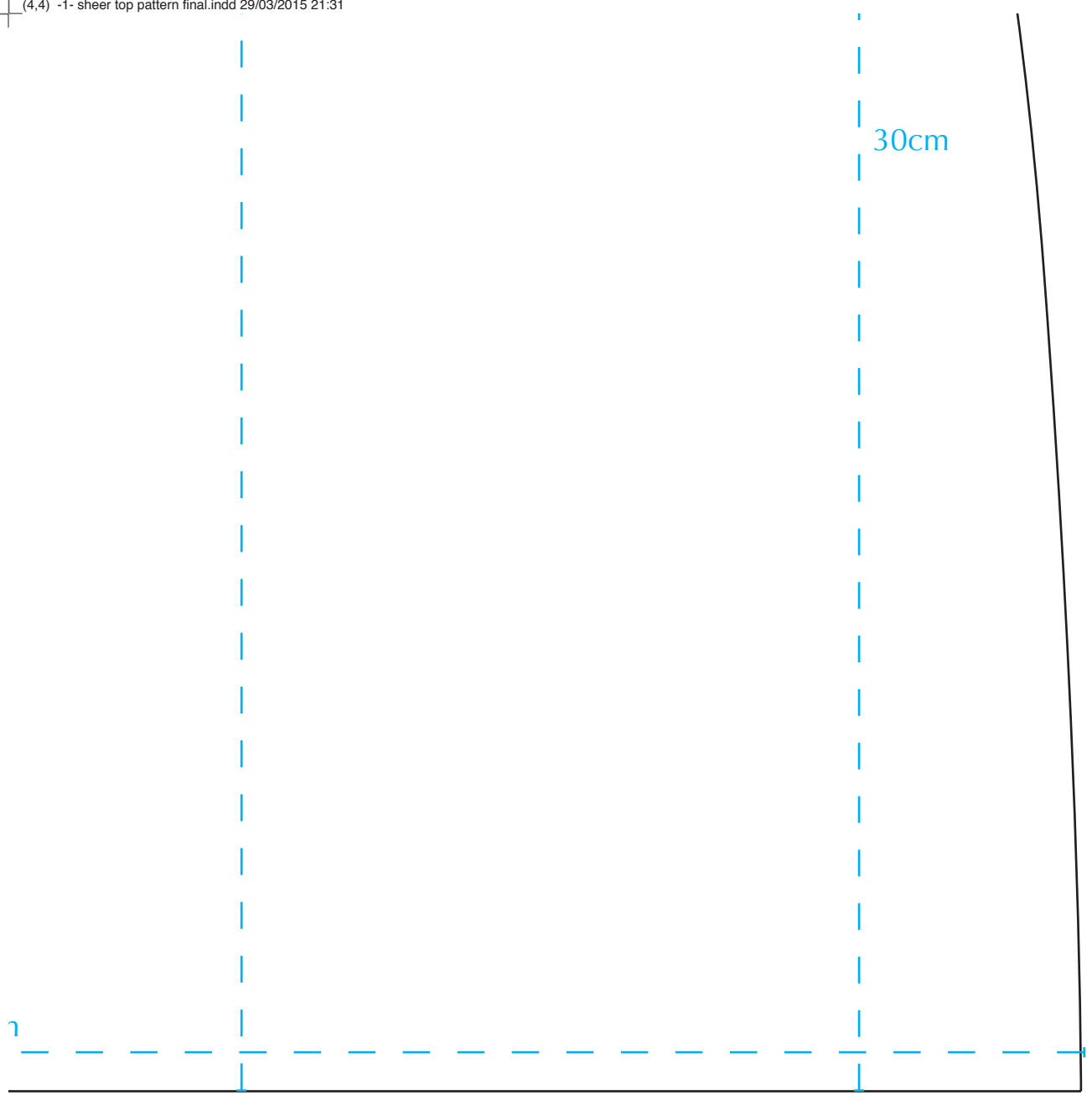


You are drawing out the pattern yourself, follow the measurements.

Following instructions in black







30cm

r