

# overview

## contrast tee

[www.sewdifferent.co.uk](http://www.sewdifferent.co.uk)



29cm



**Copyright Sew I**  
**www.sewdiffere**

While this pattern and the originator is free and the originator is them to be distributed a third parties, they must be linked and accredited to [www.sewdifferent.co.uk](http://www.sewdifferent.co.uk) pasted into an independent without permission.

If you are drawing pattern your blue measure

Sewing instructions

# CONTRAST TEE BACK & FRONT

CUT 2

**TO PRINT THIS PATTERN:**

**PRINT**

**In Page Handling:**

**Page scaling - Tile large pages**

**Tile scale - 100%**

**Overlap - 0**

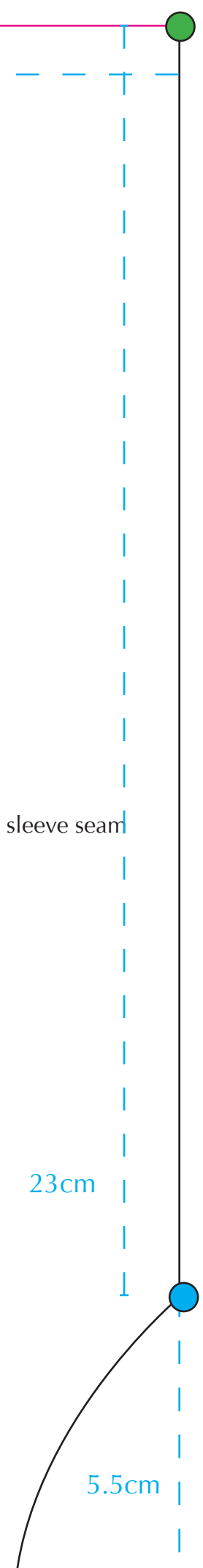
FOLD

**Different  
nt.co.uk**

utorial are  
s happy for  
nd used by  
ALWAYS be  
o the website  
c and never  
lent website

aving out the  
self, follow the  
ements.

uctions in black



15cm



**Copyright Sew Different**  
**[www.sewdifferent.co.uk](http://www.sewdifferent.co.uk)**

While this pattern and tutorial are free and the originator is happy for them to be distributed and used by third parties, they must ALWAYS be linked and accredited to the website [www.sewdifferent.co.uk](http://www.sewdifferent.co.uk) and never pasted into an independent website without permission.

Hem SHOULDER INSERTS along the pink line

Hem the BACK and FRONT panels along the pink line

Sew each of the SHOULDER INSERTS to the front, joining the green dots with the pink dots with the pink dots. Do the same for the BACK panel so the BACK are joined over the shoulder..

With right sides together, sew SLEEVE TRIM to the arm hole all the way round BACK starting and finishing at the blue dots.

With wrong sides together, fold the sleeve trim in half along its length and sew the sleeve trim to the inside hem and iron.

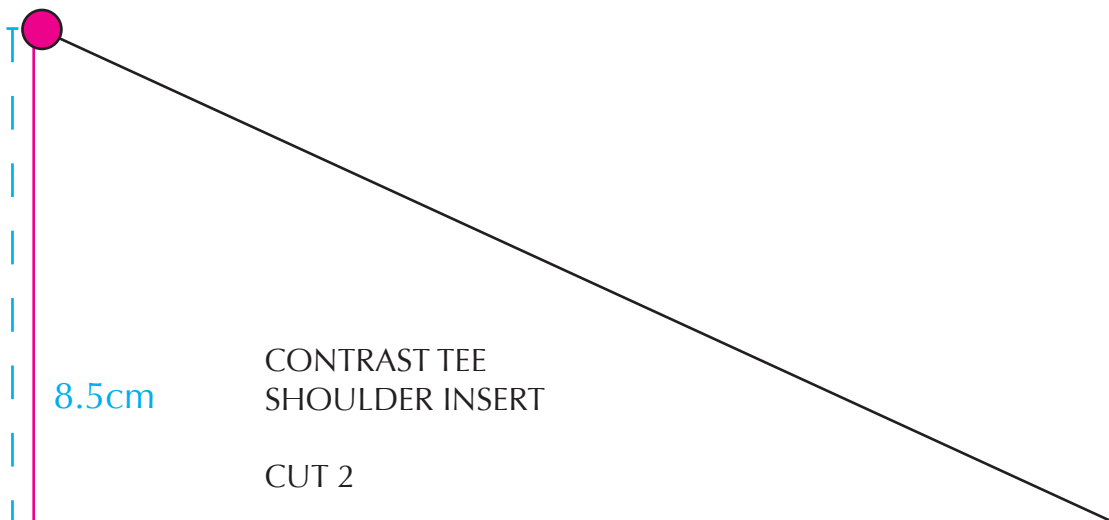
Sew the BACK panel to the FRONT along the sides with right sides together

Starting at one of the side seams, sew BOTTOM TRIM all the way round the panels with right sides together

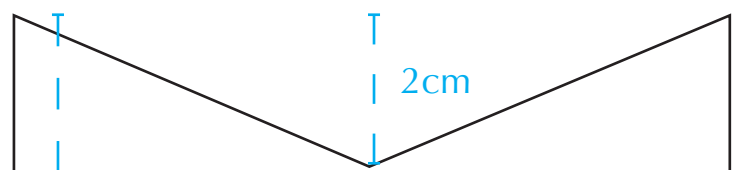
Fold BOTTOM TRIM in half lengthways (along green dash) with wrong side outside edge of the BOTTOMN TRIM to the existing hem on the inside of th

49cm

2



with the green dots  
 on the FRONT and  
 on the FRONT and  
 sew the outer edge of  
 the BACK and FRONT  
 pieces together. Sew the  
 rest of the garment.



CONTRAST TEE  
 SLEEVE TRIM

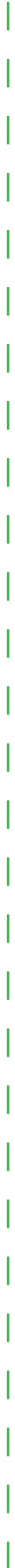
CUT 2

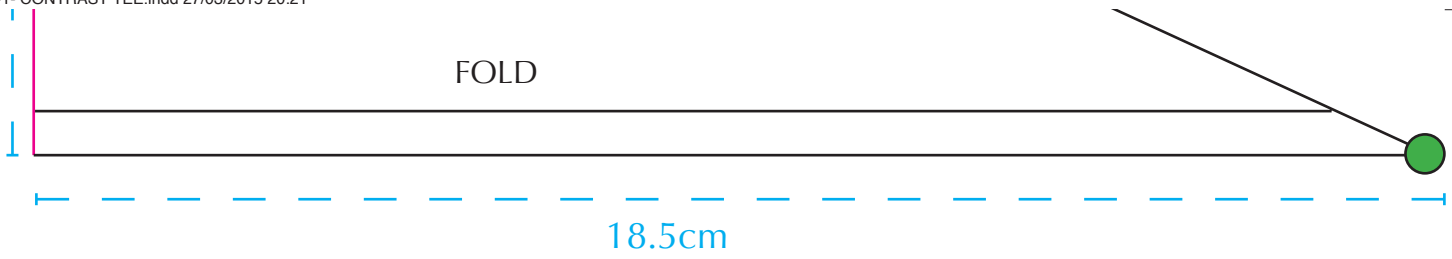
© Copyright Sew Different  
[www.sewdifferent.co.uk](http://www.sewdifferent.co.uk)

While this pattern and tutorial are free and the originator is happy for them to be distributed and used by third parties, they must ALWAYS be linked and accredited to the website [www.sewdifferent.co.uk](http://www.sewdifferent.co.uk) and never pasted into an independent website without permission.

BOTTOM TRIM

CUT 2





FOLD

18.5cm



