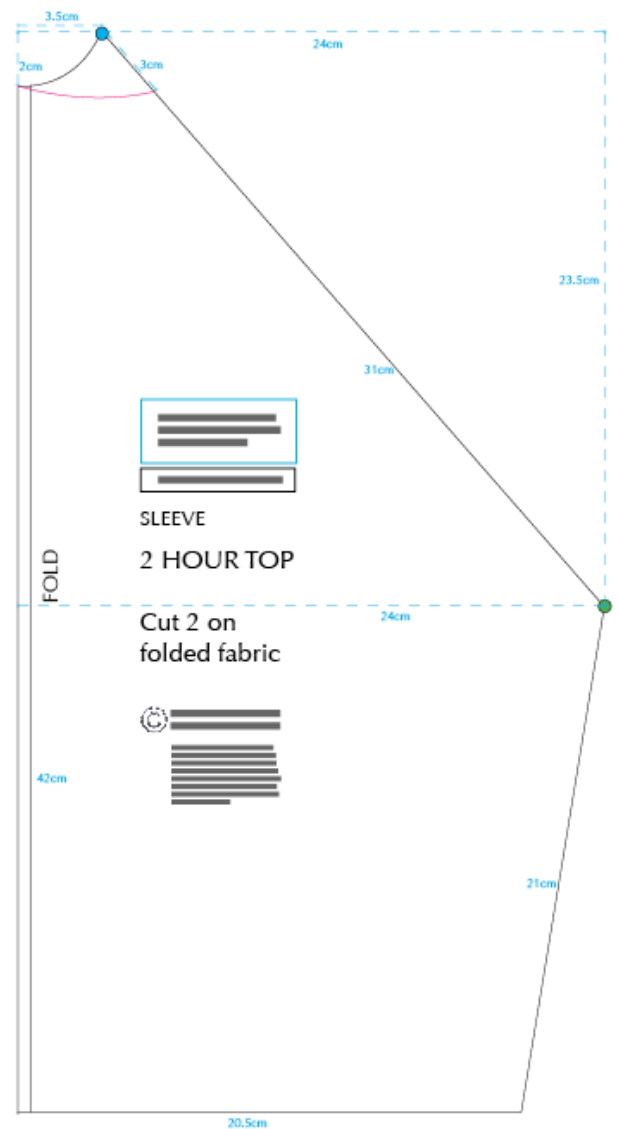
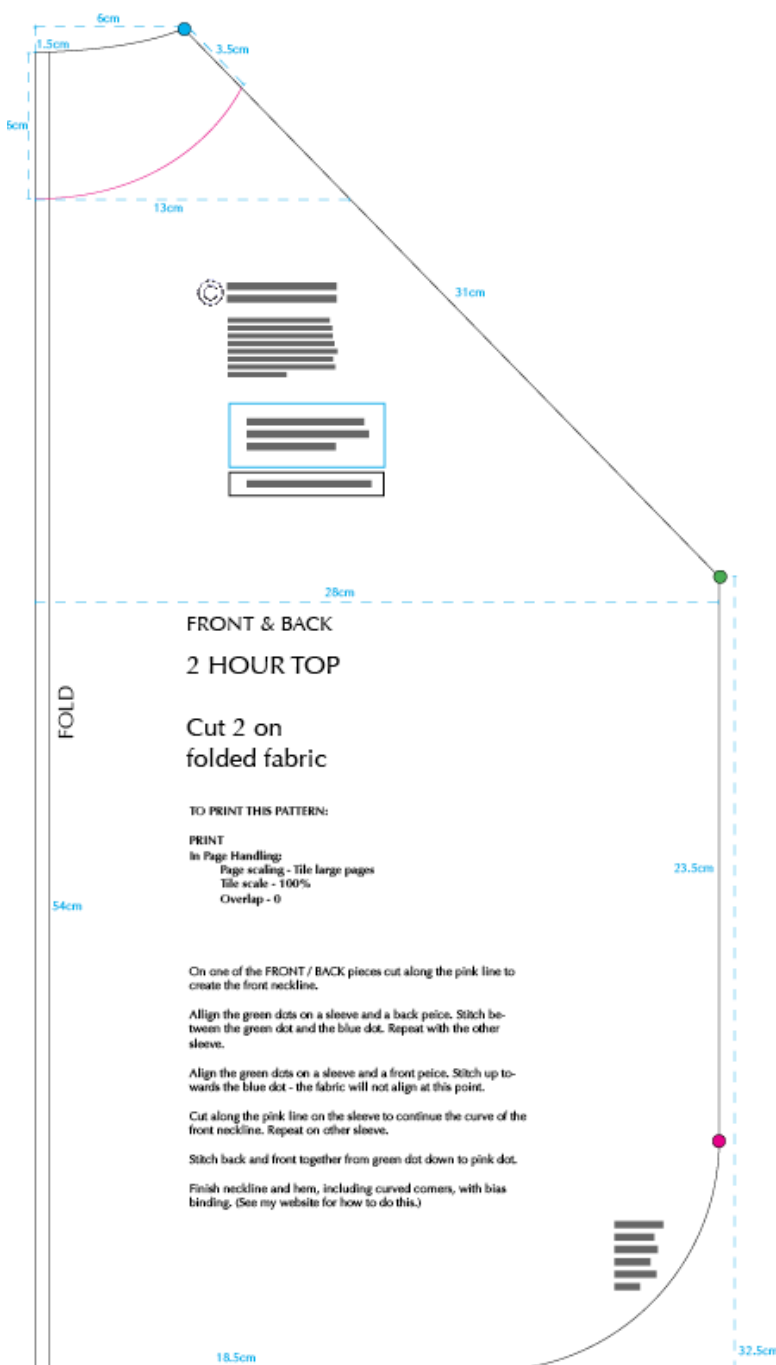
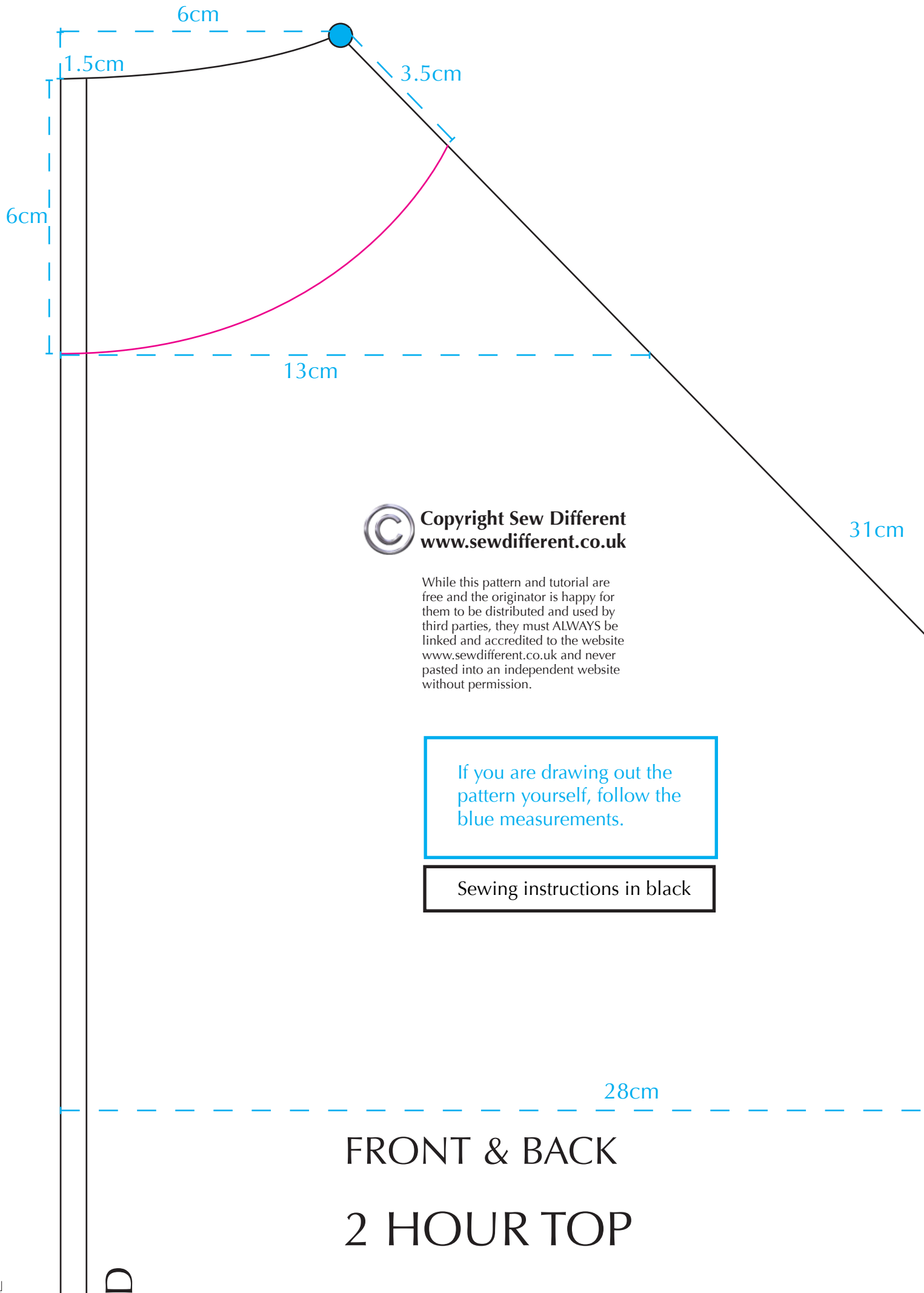


overview

2 hour top

www.sewdifferent.co.uk





Copyright Sew Different
www.sewdifferent.co.uk

While this pattern and tutorial are free and the originator is happy for them to be distributed and used by third parties, they must ALWAYS be linked and accredited to the website www.sewdifferent.co.uk and never pasted into an independent website without permission.

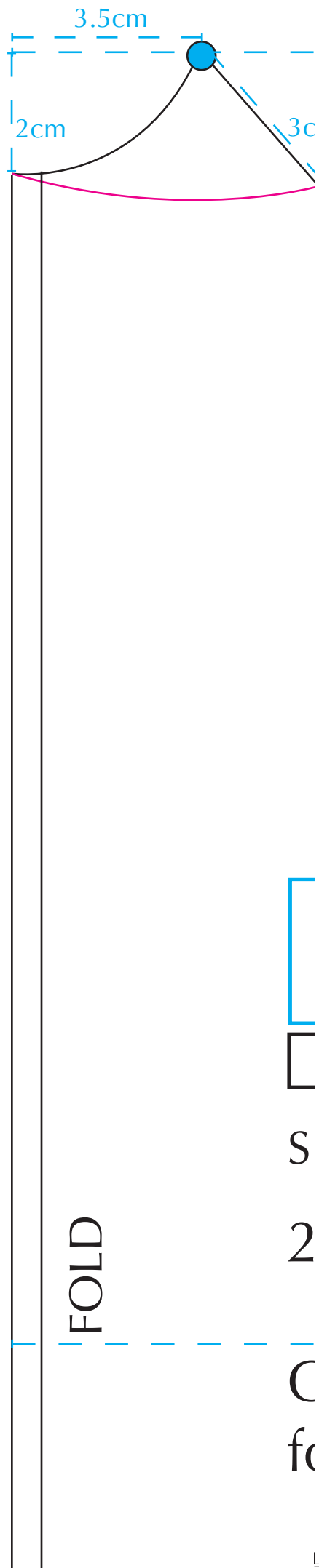
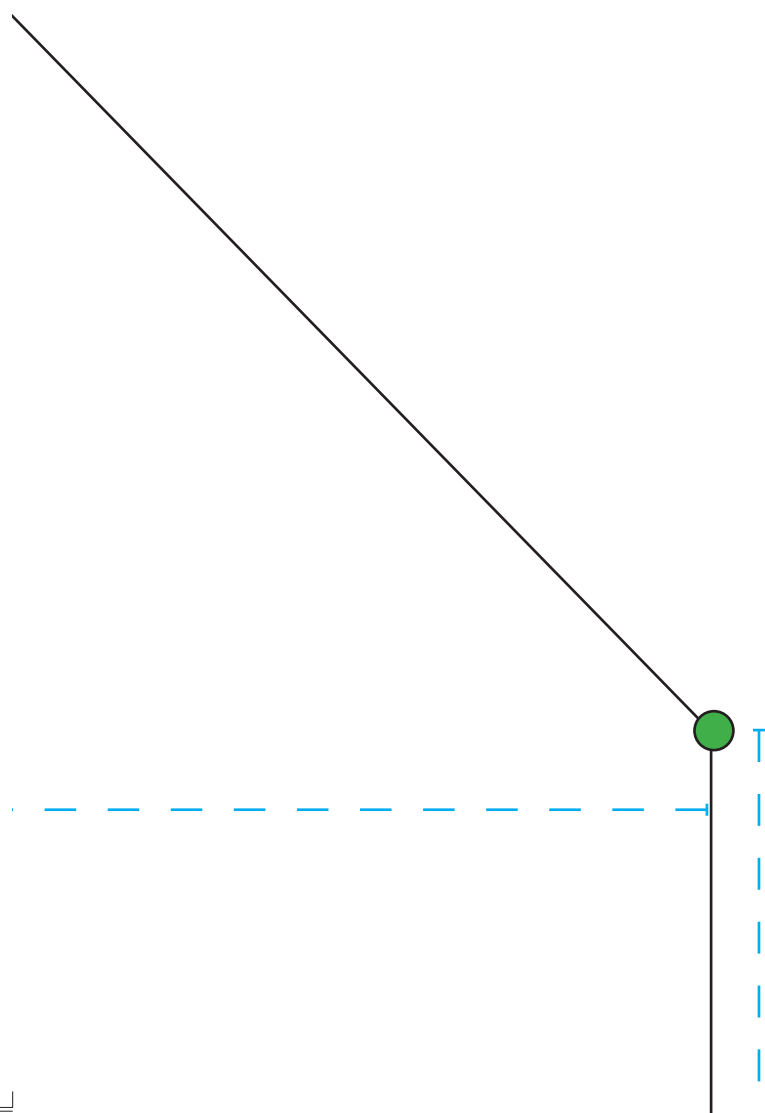
If you are drawing out the pattern yourself, follow the blue measurements.

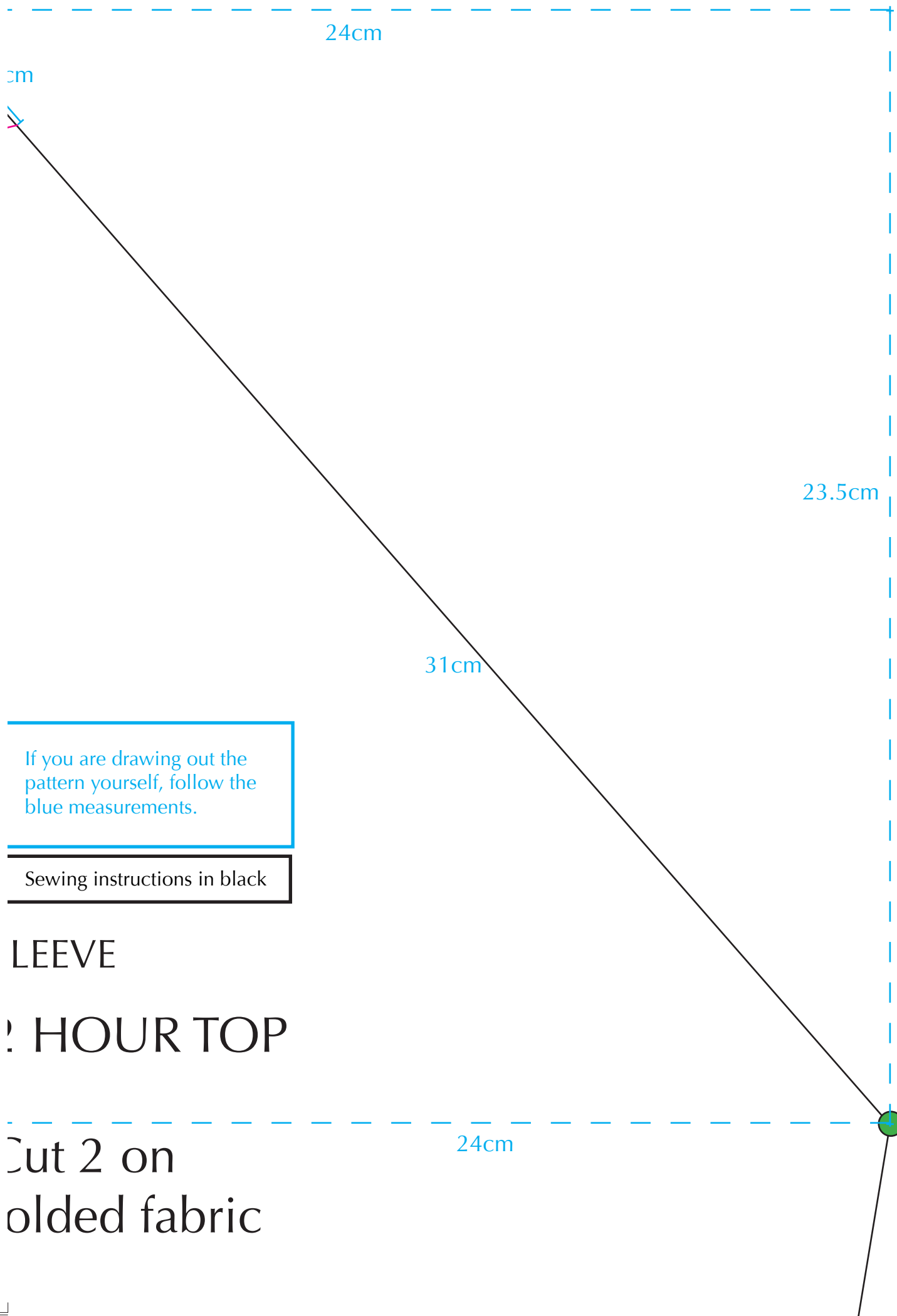
Sewing instructions in black

FRONT & BACK

2 HOUR TOP

D





24cm

cm

23.5cm

31cm

24cm

If you are drawing out the pattern yourself, follow the blue measurements.

Sewing instructions in black

SLEEVE

2 HOUR TOP

Cut 2 on
folded fabric



Cut 2 on folded fabric

TO PRINT THIS PATTERN:

PRINT

In Page Handling:

Page scaling - Tile large pages

Tile scale - 100%

Overlap - 0

54cm

On one of the FRONT / BACK pieces cut along the pink line to create the front neckline.

Align the green dots on a sleeve and a back piece. Stitch between the green dot and the blue dot. Repeat with the other sleeve.

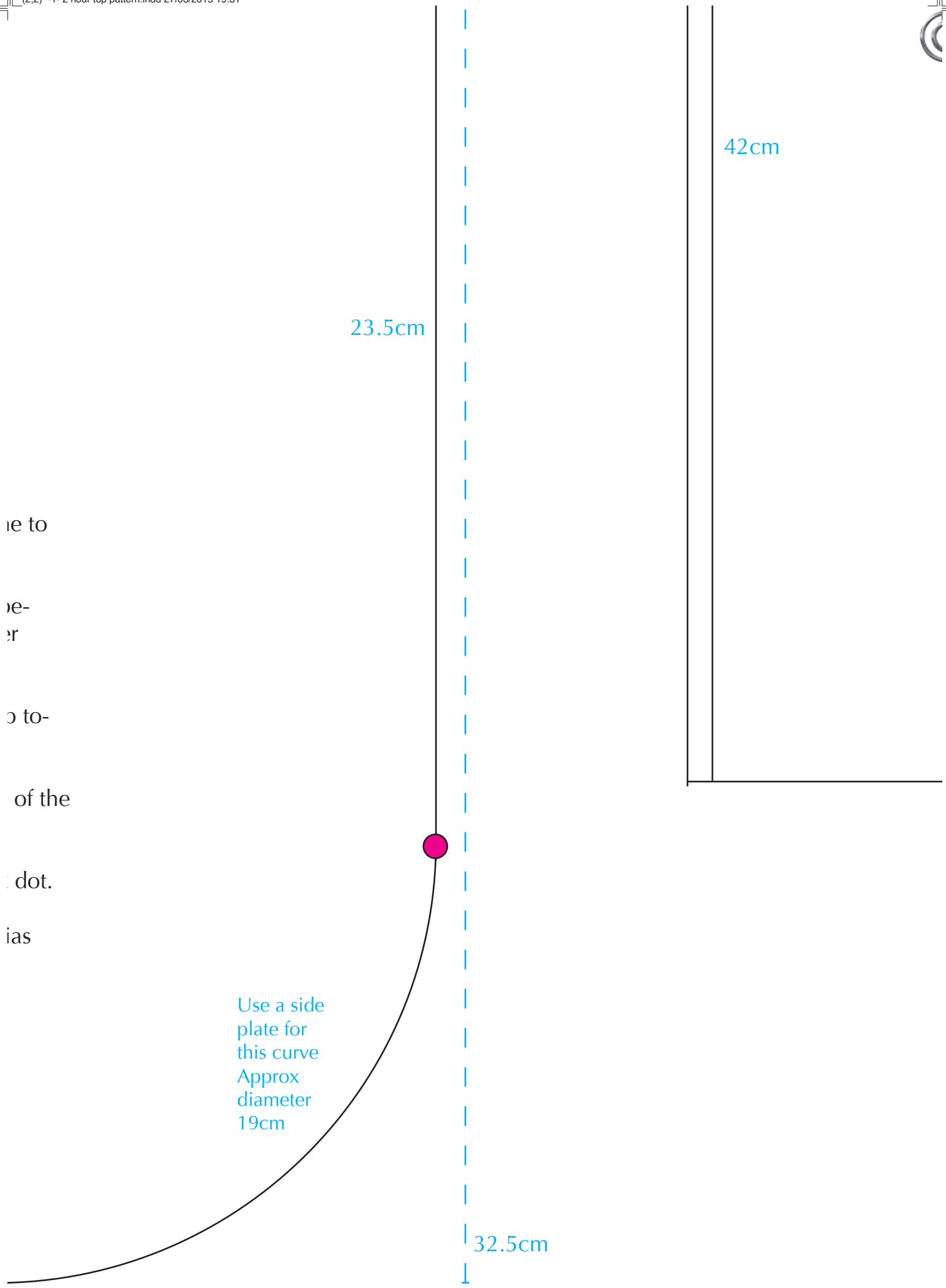
Align the green dots on a sleeve and a front piece. Stitch upwards to the blue dot - the fabric will not align at this point.

Cut along the pink line on the sleeve to continue the curve of the front neckline. Repeat on other sleeve.

Stitch back and front together from green dot down to pink line.

Finish neckline and hem, including curved corners, with bias binding. (See my website for how to do this.)

18.5cm



ie to

re-
er

o to-

of the

dot.

ias





While this pattern and tutorial are free and the originator is happy for them to be distributed and used by third parties, they must ALWAYS be linked and accredited to the website www.sewdifferent.co.uk and never pasted into an independent website without permission.





