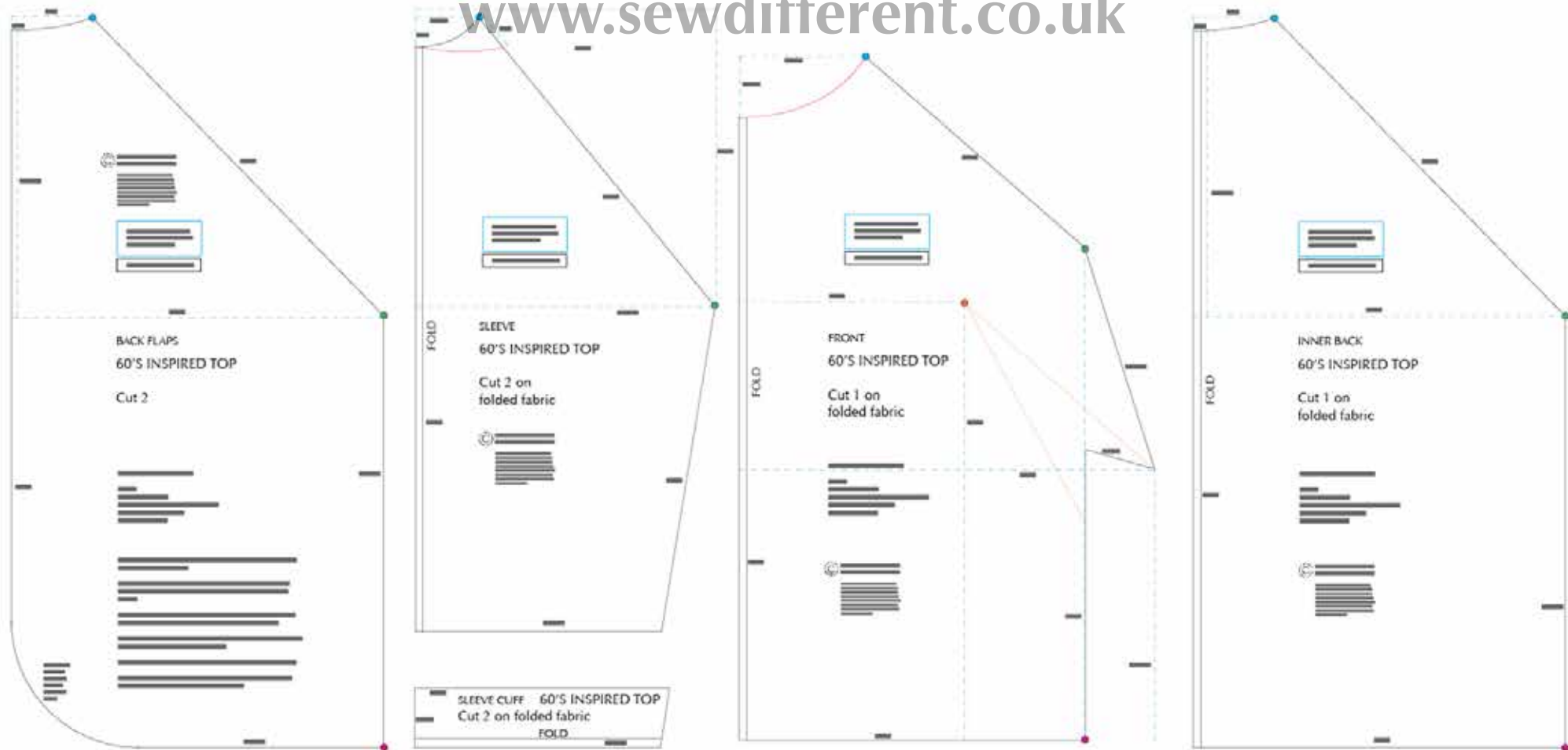
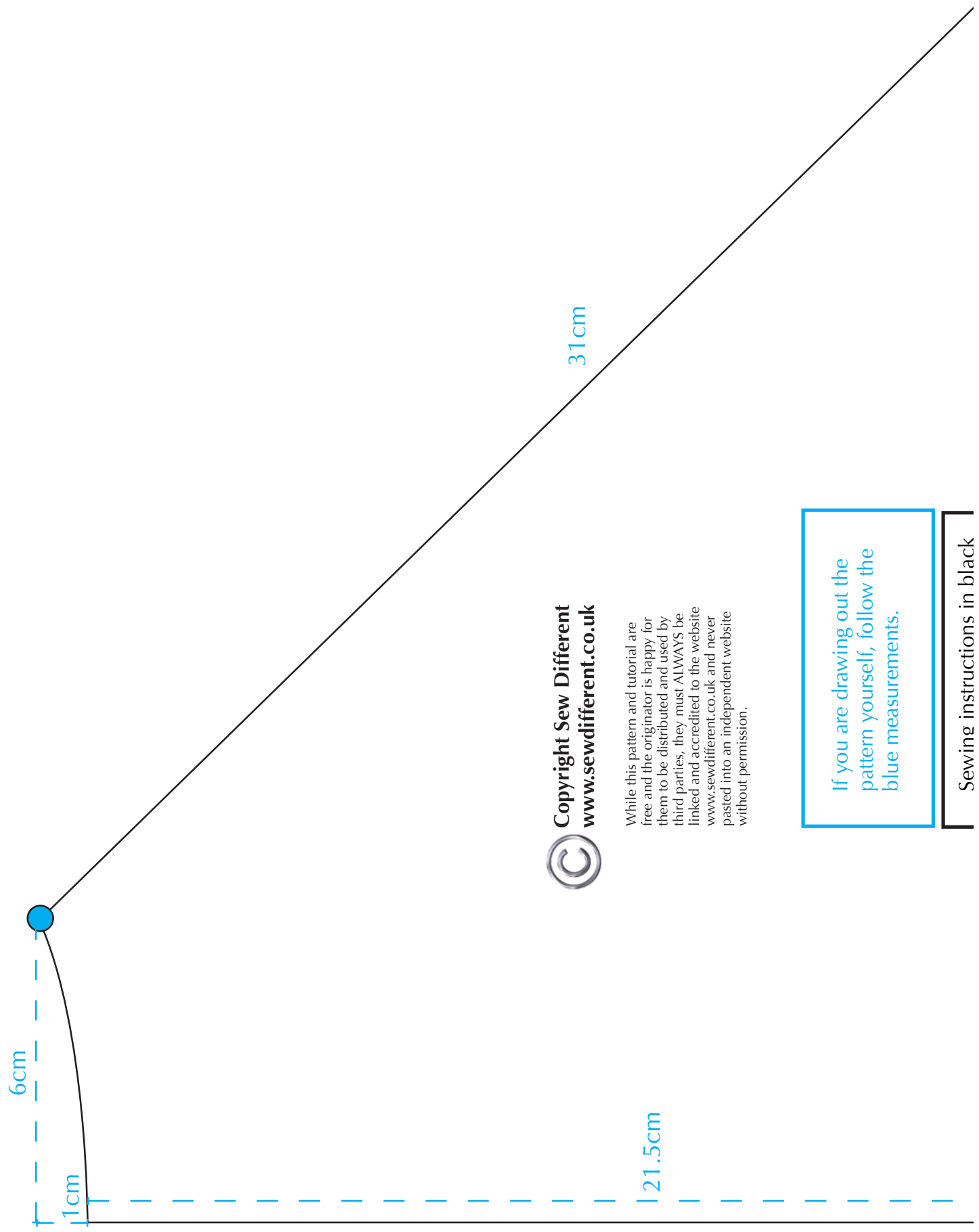


# overview

## 60s inspired top

[www.sewdifferent.co.uk](http://www.sewdifferent.co.uk)



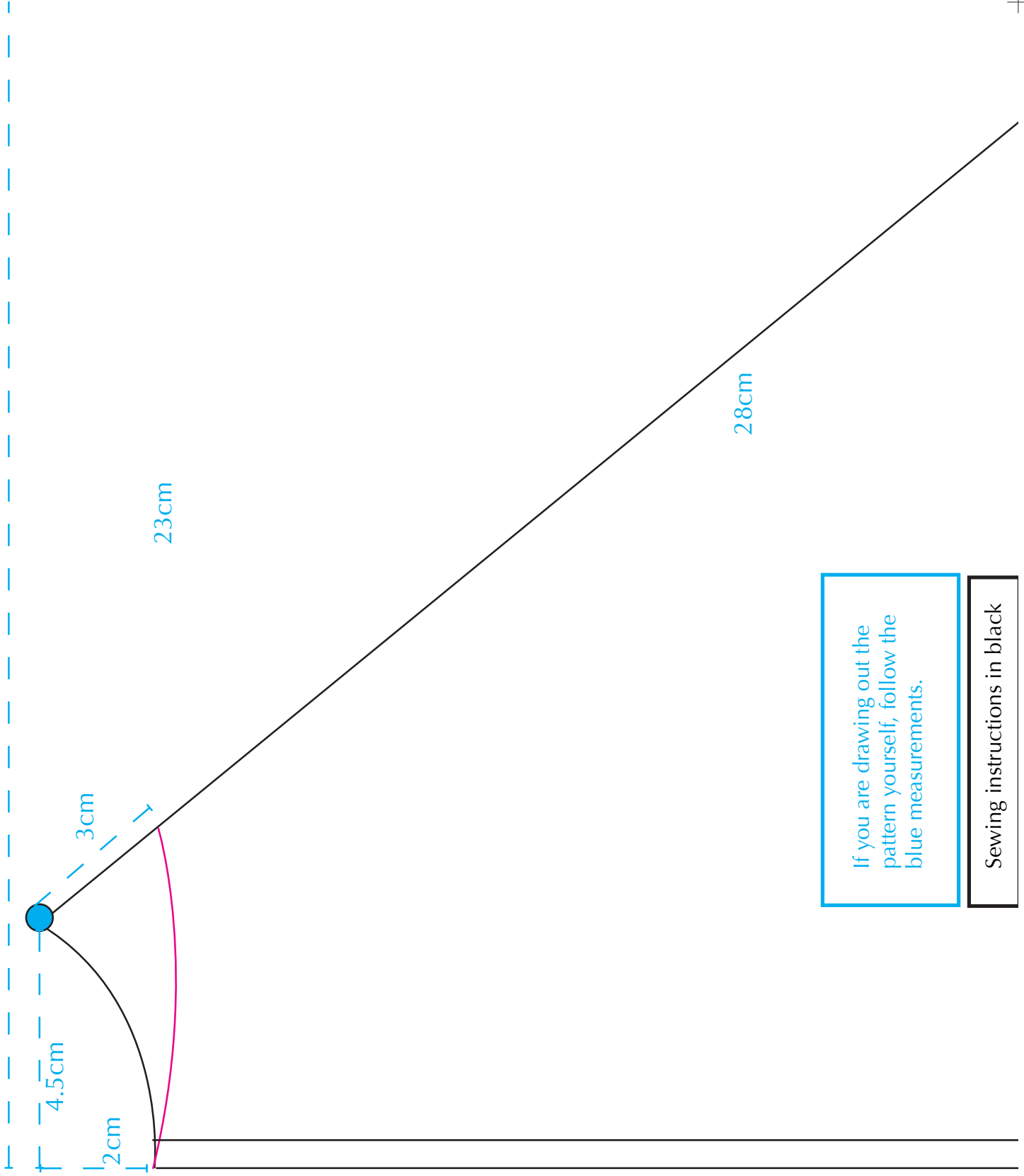


Copyright Sew Different  
[www.sewdifferent.co.uk](http://www.sewdifferent.co.uk)

While this pattern and tutorial are free and the originator is happy for them to be distributed and used by third parties, they must ALWAYS be linked and accredited to the website [www.sewdifferent.co.uk](http://www.sewdifferent.co.uk) and never pasted into an independent website without permission.

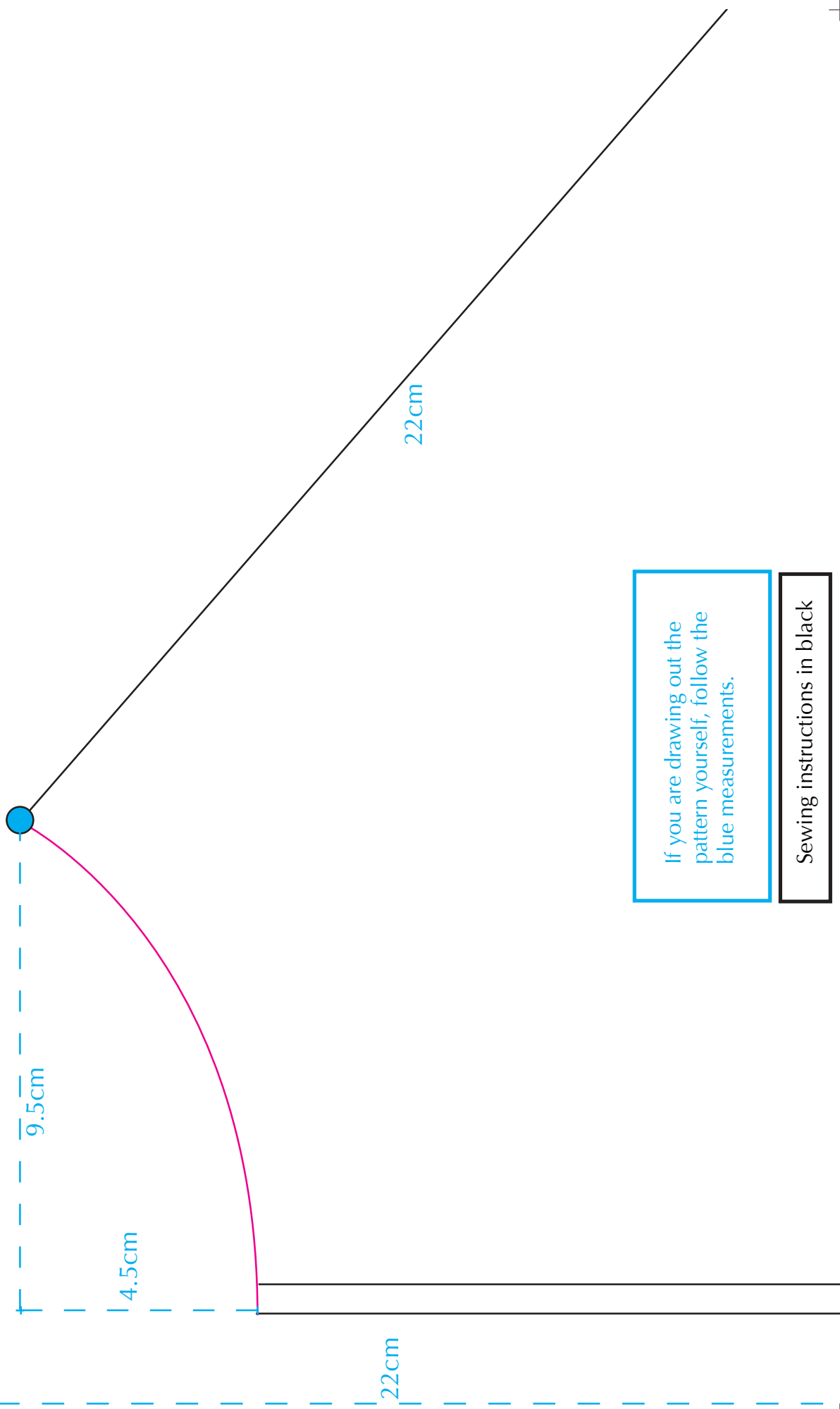
If you are drawing out the pattern yourself, follow the blue measurements.

Sewing instructions in black



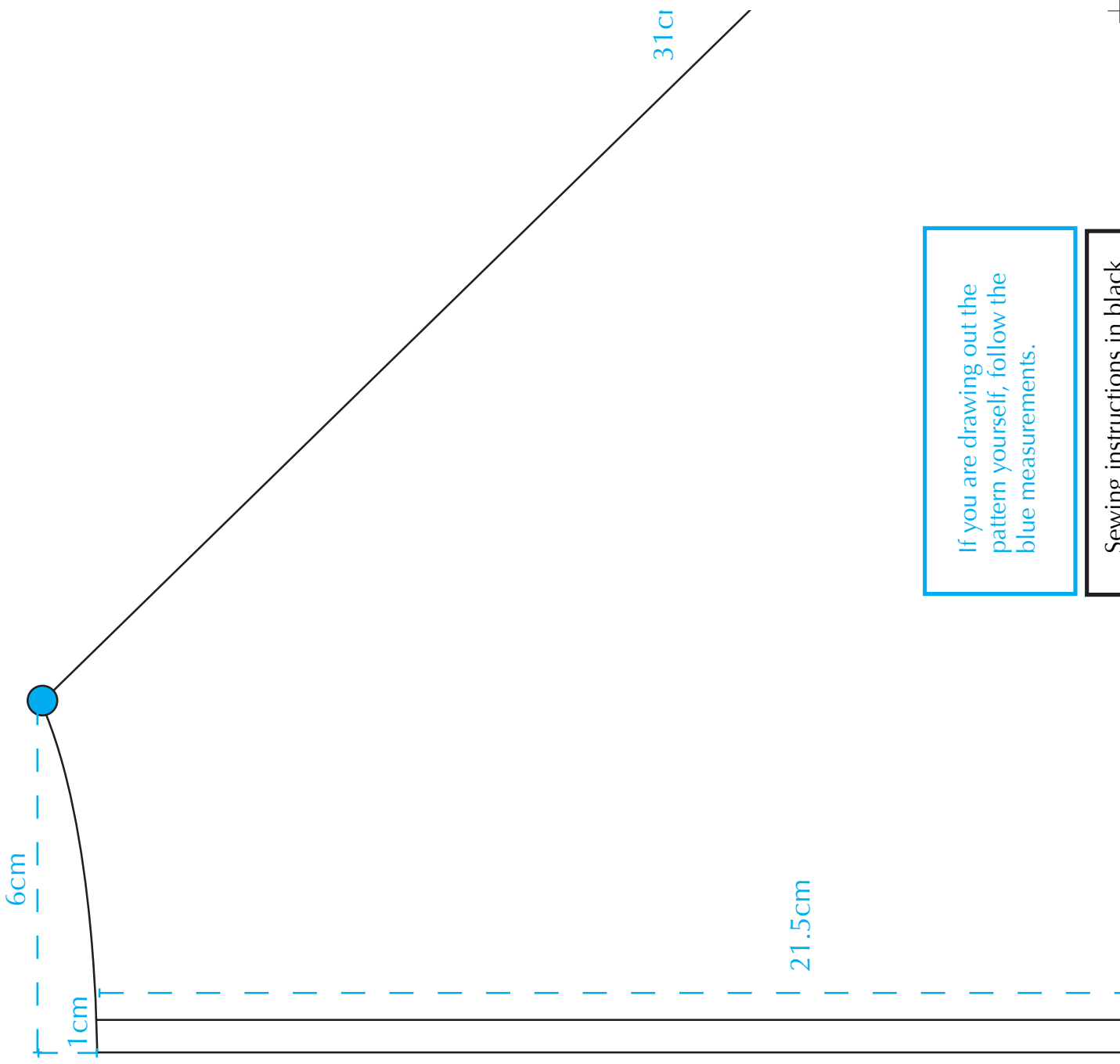
If you are drawing out the pattern yourself, follow the blue measurements.

Sewing instructions in black



If you are drawing out the pattern yourself, follow the blue measurements.

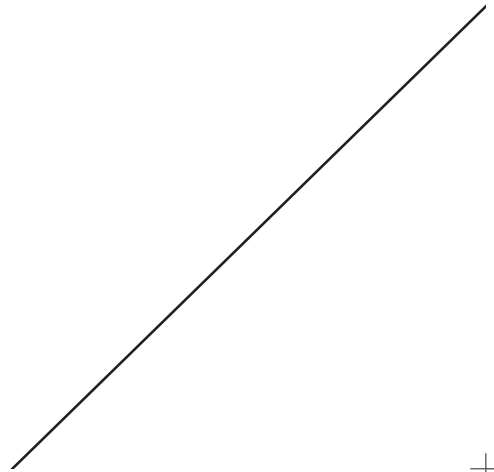
Sewing instructions in black



If you are drawing out the pattern yourself, follow the blue measurements.

Sewing instructions in black

m





28cm

BACK FLAPS

60'S INSPIRED TOP

Cut 2

45cm

TO PRINT THIS PATTERN:

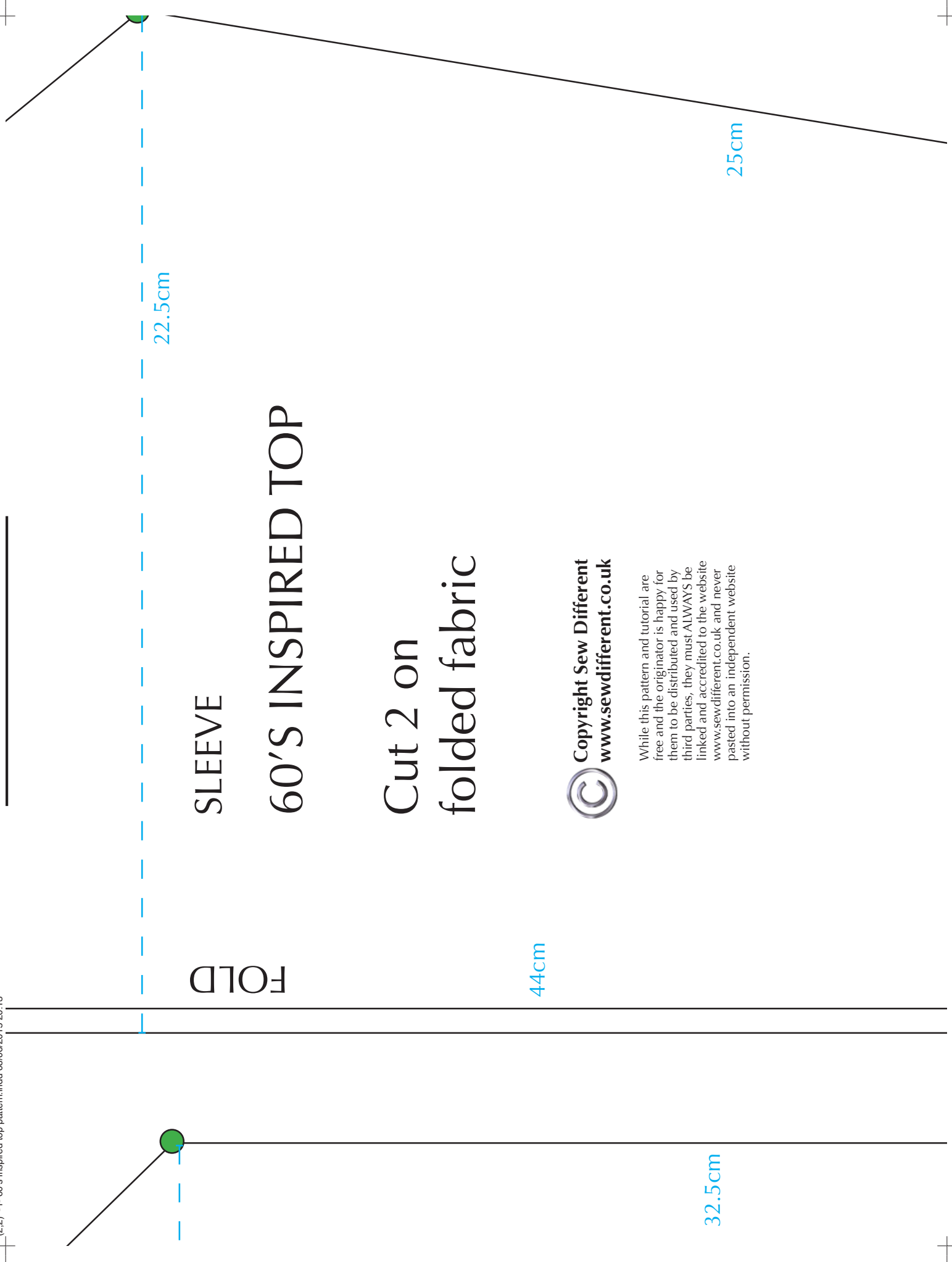
PRINT

In Page Handling:

Page scaling - Tile large pages

Tile scale - 100%

Overlap - 0



FOLD

SLEEVE

60'S INSPIRED TOP

Cut 2 on  
folded fabric

44cm

32.5cm

25cm

© Copyright Sew Different  
[www.sewdifferent.co.uk](http://www.sewdifferent.co.uk)

While this pattern and tutorial are free and the originator is happy for them to be distributed and used by third parties, they must ALWAYS be linked and accredited to the website [www.sewdifferent.co.uk](http://www.sewdifferent.co.uk) and never pasted into an independent website without permission.



17cm



FRONT

60'S INSPIRED TOP

Cut 1 on  
folded fabric

FOLD

33cm

31cm

TO PRINT THIS PATTERN:

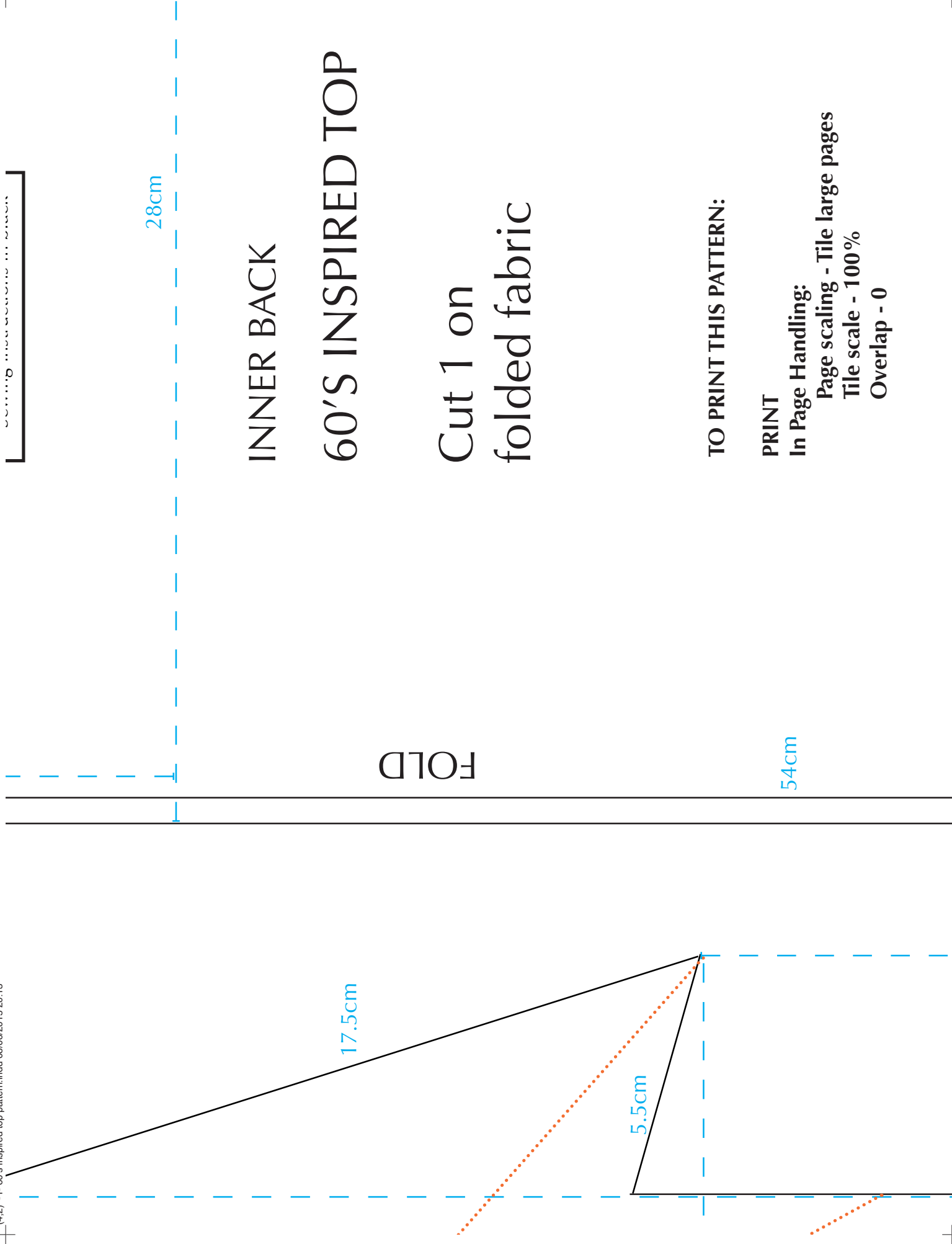
PRINT

In Page Handling:

Page scaling - Tile large pages

Tile scale - 100%

Overlap - 0



INNER BACK

# 60'S INSPIRED TOP

Cut 1 on  
folded fabric

FOLD

TO PRINT THIS PATTERN:

**PRINT**

**In Page Handling:**

Page scaling - Tile large pages

Tile scale - 100%

Overlap - 0



On one of the FRONT / BACK pieces cut along the pink line to create the front neckline.

Allign the green dots on a sleeve and a back peice. Stitch between the green dot and the blue dot. Repeat with the other sleeve.

Align the green dots on a sleeve and a front peice. Stitch upwards the blue dot - the fabric will not align at this point.

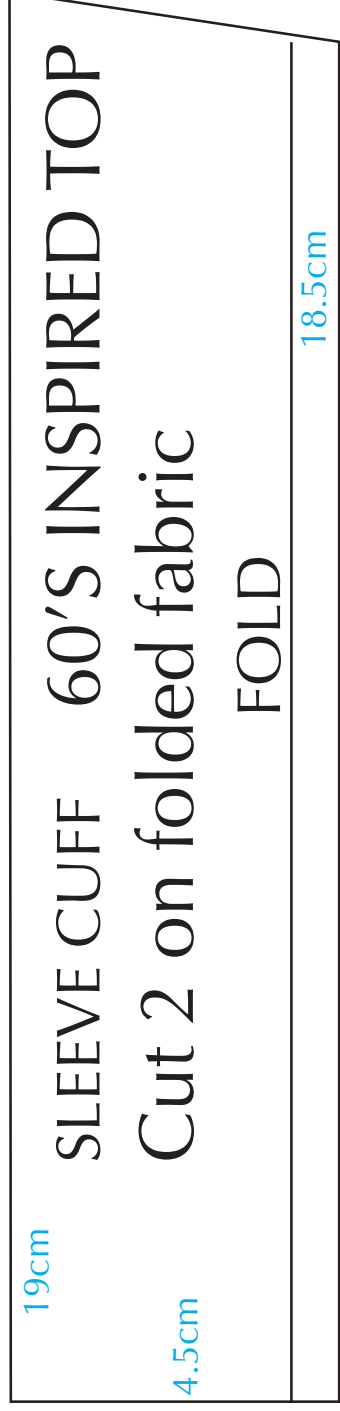
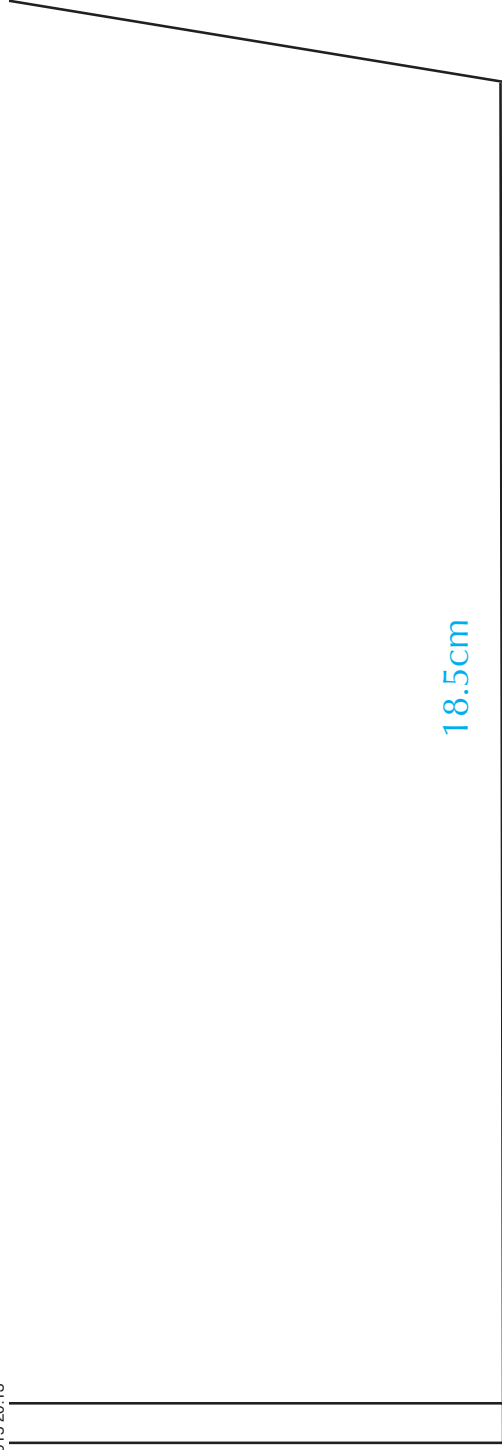
Cut along the pink line on the sleeve to continue the curve of the front neckline. Repeat on other sleeve.

Stitch back and front together from green dot down to pink dot.

Finish neckline and hem, including curved corners, with bias binding. (See my website for how to do this.)

Use a side plate for this curve  
Approx diameter 19cm

18.5cm



18.5cm

19cm

4.5cm

SLEEVE CUFF 60'S INSPIRED TOP

Cut 2 on folded fabric

FOLD

18.5cm

47cm



**Copyright Sew Different**  
[www.sewdifferent.co.uk](http://www.sewdifferent.co.uk)

While this pattern and tutorial are free and the originator is happy for them to be distributed and used by third parties, they must ALWAYS be linked and accredited to the website [www.sewdifferent.co.uk](http://www.sewdifferent.co.uk) and never pasted into an independent website without permission.

26cm



**Copyright Sew Different**  
[www.sewdifferent.co.uk](http://www.sewdifferent.co.uk)

While this pattern and tutorial are free and the originator is happy for them to be distributed and used by third parties, they must ALWAYS be linked and accredited to the website [www.sewdifferent.co.uk](http://www.sewdifferent.co.uk) and never pasted into an independent website without permission.

cm

20.5cm

28cm



32.5cm

