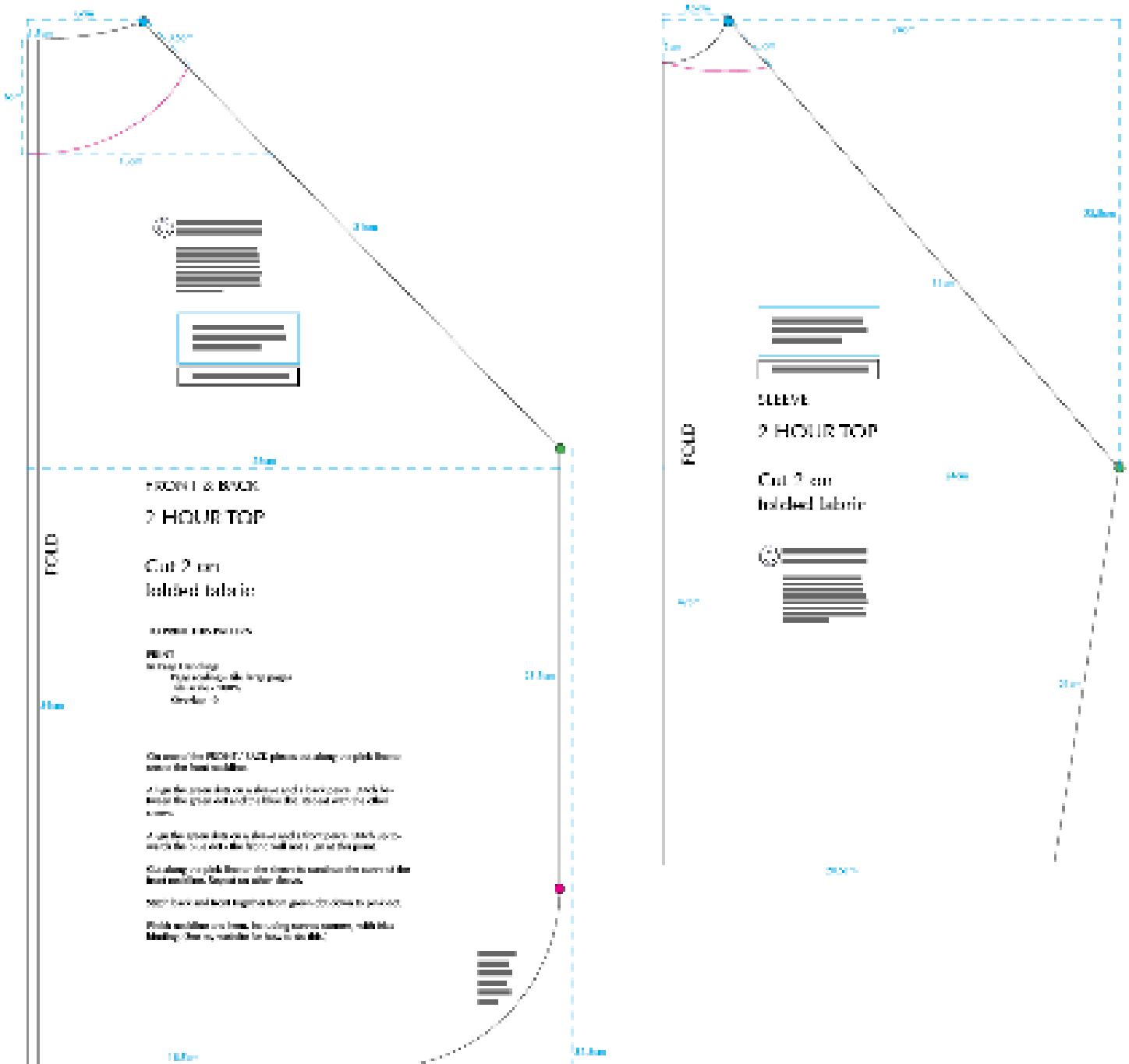
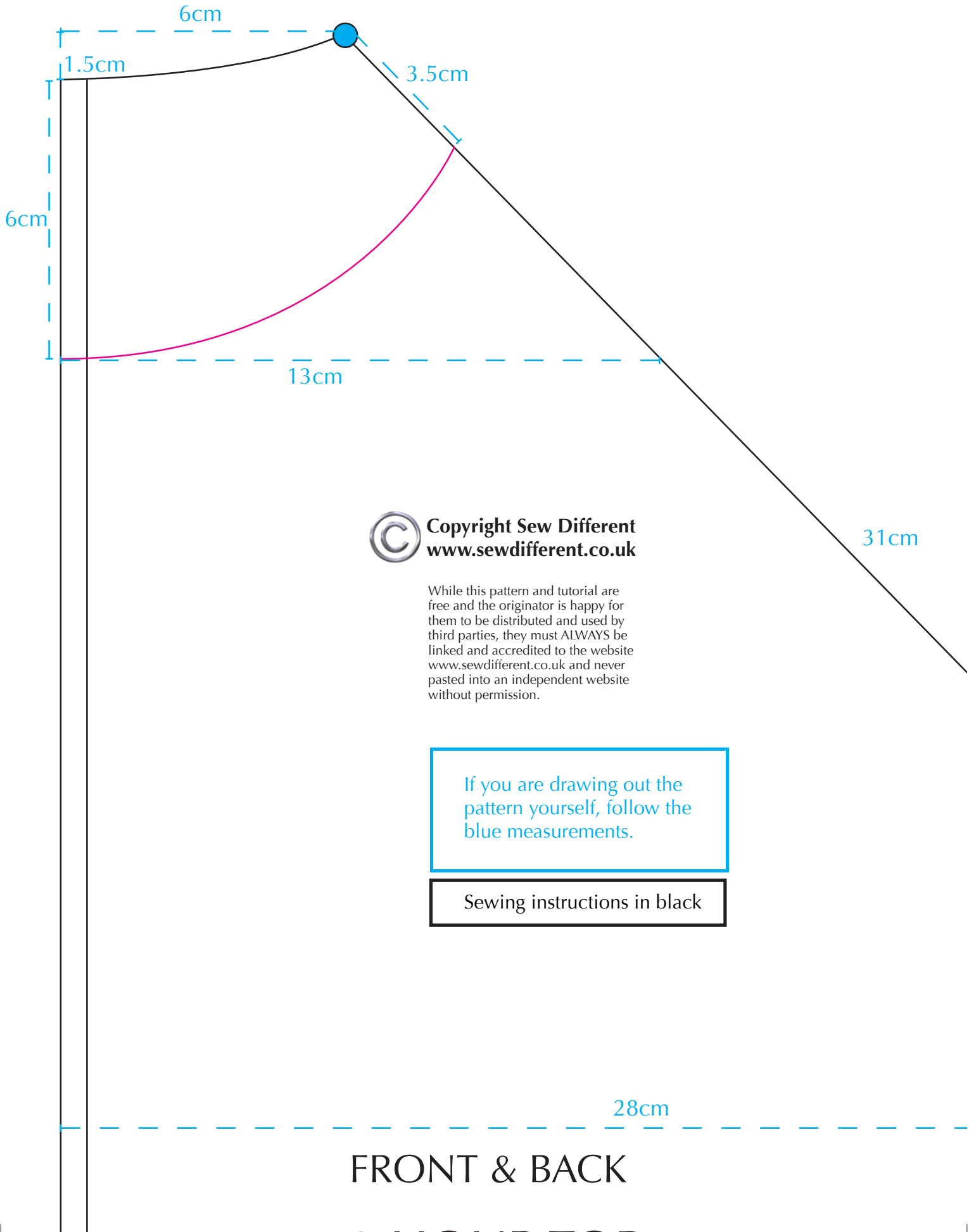


overview

2 hour top

www.sewdifferent.co.uk





Copyright Sew Different
www.sewdifferent.co.uk

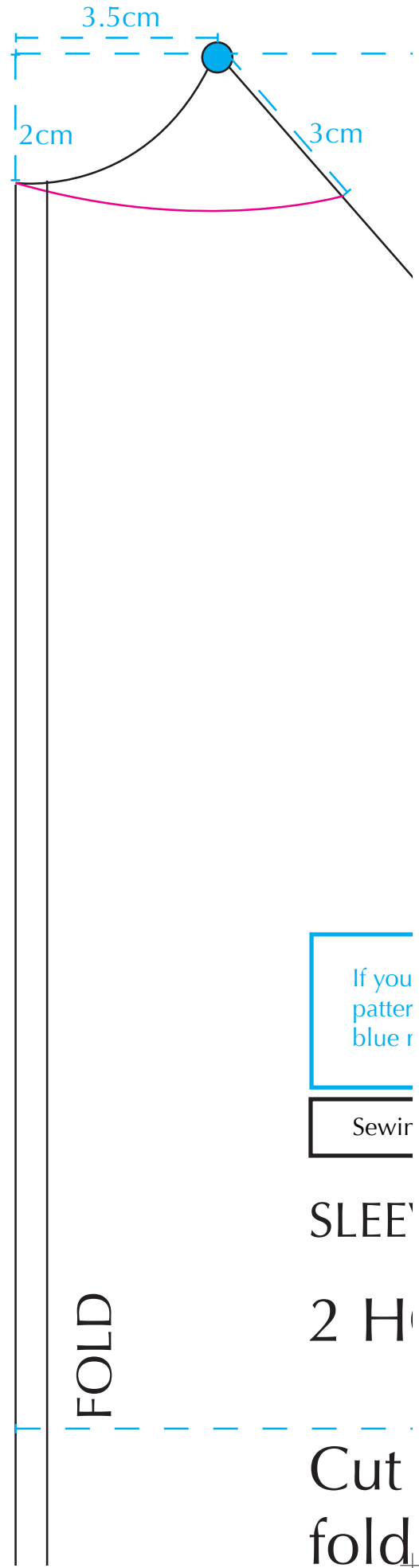
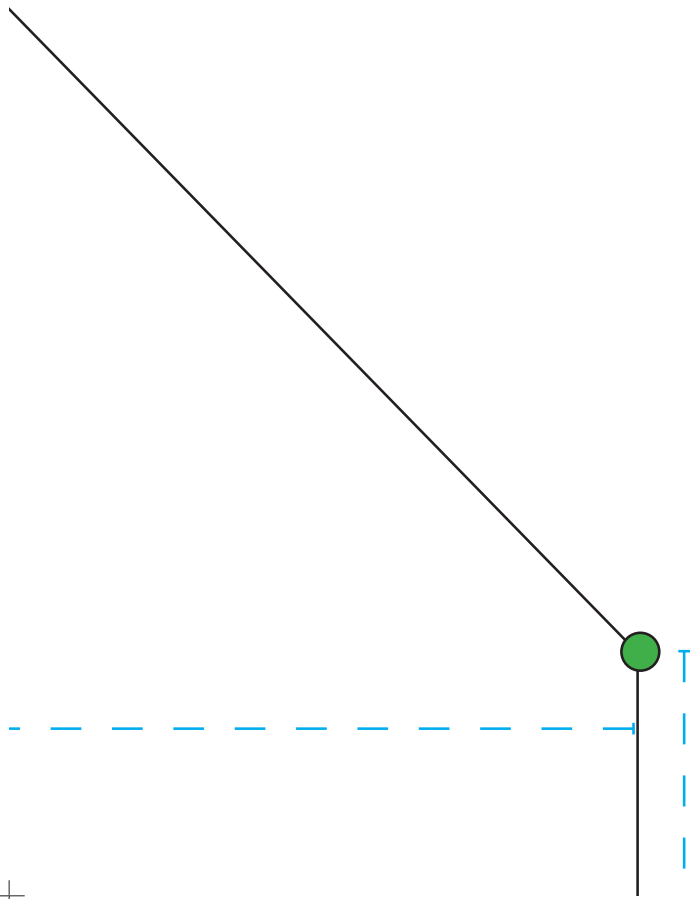
While this pattern and tutorial are free and the originator is happy for them to be distributed and used by third parties, they must ALWAYS be linked and accredited to the website www.sewdifferent.co.uk and never pasted into an independent website without permission.

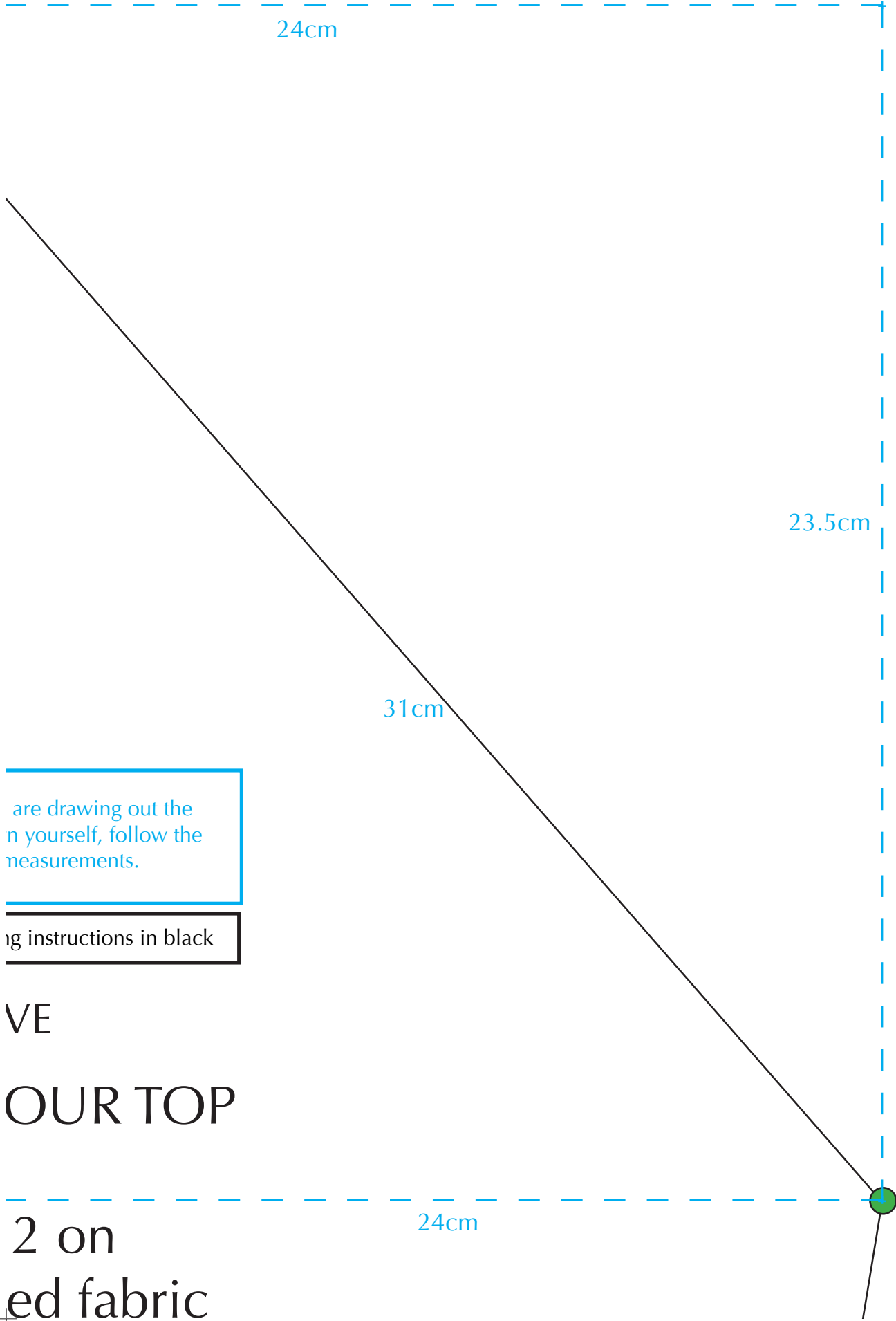
If you are drawing out the pattern yourself, follow the blue measurements.

Sewing instructions in black

FRONT & BACK

28cm





are drawing out the
n yourself, follow the
measurements.

ig instructions in black

VE

OUR TOP

2 on
ed fabric

FOLD

54cm

2 HOUR TOP

Cut 2 on folded fabric

TO PRINT THIS PATTERN:

PRINT

In Page Handling:

Page scaling - Tile large pages

Tile scale - 100%

Overlap - 0

On one of the FRONT / BACK pieces cut along the pink line to create the front neckline.

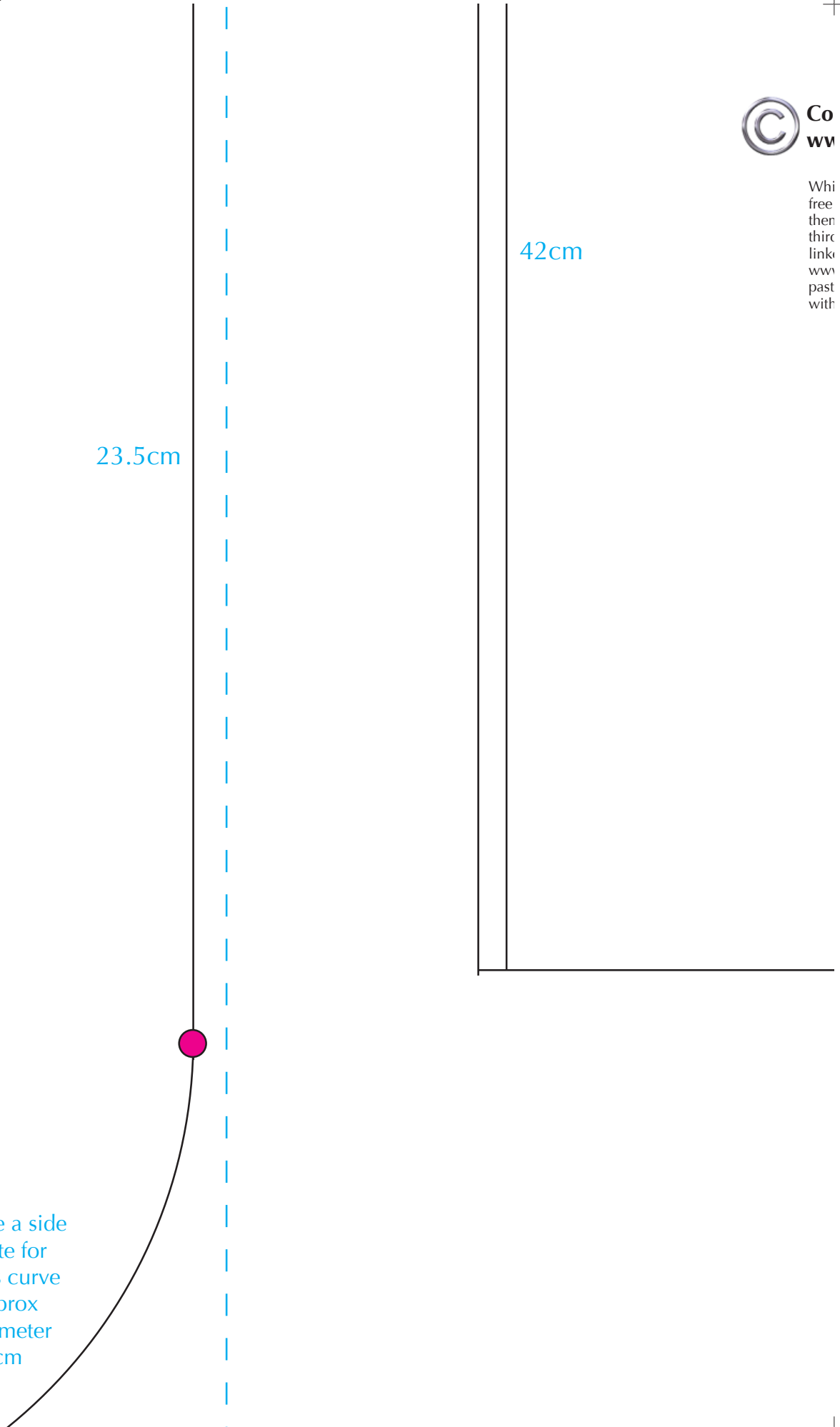
Align the green dots on a sleeve and a back piece. Stitch between the green dot and the blue dot. Repeat with the other sleeve.

Align the green dots on a sleeve and a front piece. Stitch up towards the blue dot - the fabric will not align at this point.

Cut along the pink line on the sleeve to continue the curve of front neckline. Repeat on other sleeve.

Stitch back and front together from green dot down to pink dot

Finish neckline and hem, including curved corners, with bias binding. (See my website for how to do this.)



)

-

the

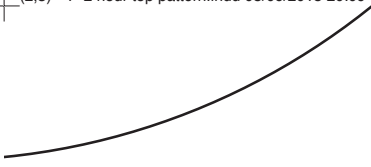
t.

Copyright Sew Different
www.sewdifferent.co.uk

If this pattern and tutorial are
and the originator is happy for
n to be distributed and used by
1 parties, they must ALWAYS be
ed and accredited to the website
www.sewdifferent.co.uk and never
ed into an independent website
without permission.



18.5cm



32.5cm

